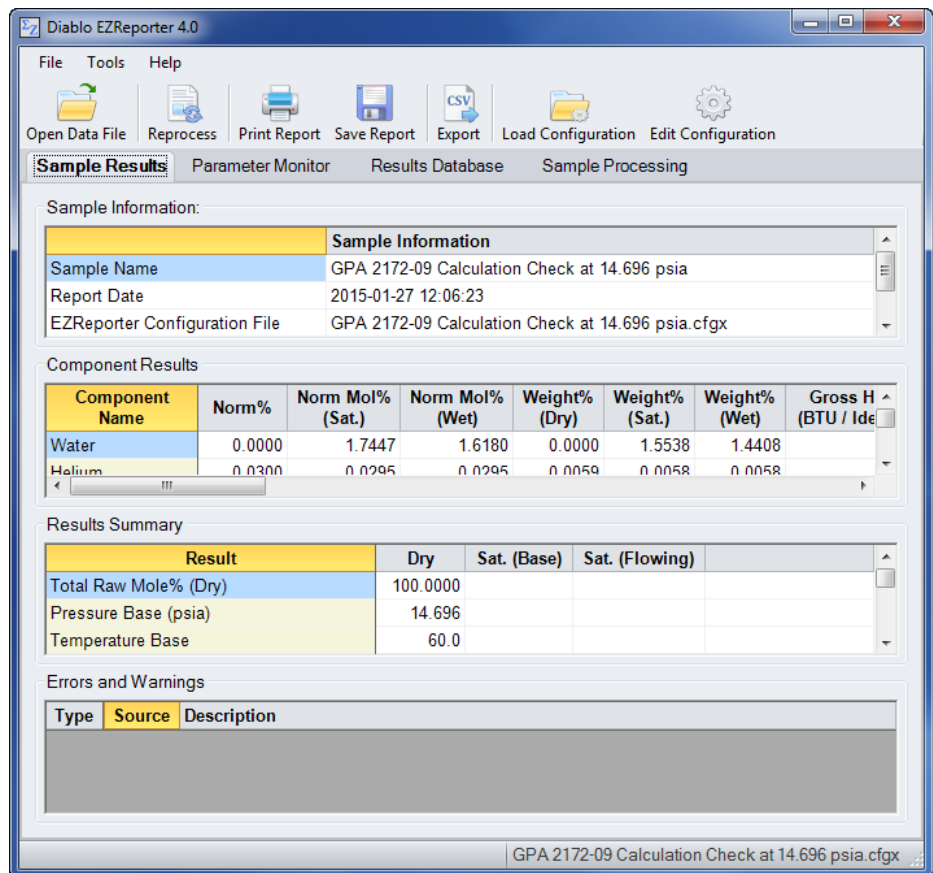


# ABB PCCU Connector Plugin



Diablo Analytical EZReporter Software  
**EZReporter 4.0 ABB PCCU Connector Plugin**

Copyright 2017, Diablo Analytical, Inc. All rights reserved.

This software and documentation are copyrighted by Diablo Analytical, Inc. All other brands or product names are trademarks or registered trademarks of their respective owners.

***Diablo Analytical, Inc.***

5141 Lone Tree Way  
Antioch, CA 94531

Phone: 925-755-1005

Fax: 925-755-1007

E-mail: [support@diabloanalytical.com](mailto:support@diabloanalytical.com)

Home Page: [www.diabloanalytical.com](http://www.diabloanalytical.com)

Manual Revision 20170419-1046

---

## DIABLO ANALYTICAL, INC. SOFTWARE LICENSE AGREEMENT AND LIMITED WARRANTY

### LICENSE AGREEMENT

**IMPORTANT:** Please carefully read the License Agreement below before installing the software. The right to use this software product is sold only on the condition that the customer agrees to the following license. **INSTALLING THE SOFTWARE INDICATES YOUR ACCEPTANCE OF THESE TERMS AND CONDITIONS.**

In return for payment of the one-time license fee for this software product, Customer receives from Diablo Analytical, Inc. (Diablo) a license to use the product subject to the following terms and conditions:

**Use:** The product may be used one computer or workstation. A separate license agreement and fee is required for each additional computer or workstation on which the product is used. Customer may not reverse assemble, decompile, or modify the software.

**Copies:** The software product may not be duplicated or copied except for archive purposes, program error verification, or to replace defective media, and all copies made must bear the copyright notices contained in the original.

**Ownership:** Purchase of this license does not transfer any right, title or interest in the software product to Customer except as specifically set forth in this License Agreement. Customer is on notice that the software product is protected under copyright laws.

**Transfer of Rights:** This license and the software product may be transferred to a third party, with prior written consent from Diablo, provided the third party agrees to all the terms of this License Agreement and the Customer does not retain any copies of the software product.

**Sublicensing and Distribution:** Customer may not sublicense the software or distribute copies of the software to the public in physical media or by telecommunication without the prior written consent of Diablo.

**Termination:** Diablo reserves the right to terminate this license upon breach. In event of termination, Customer will either return all copies of the product to Diablo, or with Diablo's prior consent, provide Diablo with a certificate of destruction of all copies.

**Updates and Upgrades:** Customer agrees that the software does not include updates and upgrades which may be available from Diablo in a separate support agreement.

**Export Restrictions:** Customer agrees not to export or re-export the software or any copy in violation of the U.S. Export Administration regulations or other applicable regulation.

### LIMITED WARRANTY

**Limited Warranty:** Diablo warrants that the original disks are free from defects for 90 days from the date of delivery of the software.

**No Other Warranties:** To the maximum extent permitted by applicable law, Diablo expressly disclaims any warranty for the software product. The software product and any related documentation is provided "as is" without warranty of any kind, either express or implied, including, without limitation, the implied warranties or merchantability of fitness for a particular purpose. The entire risk arising out of use or performance of the software product remains with the customer.

**Limitation of Liability and Customer Remedies:** Diablo's entire liability and the customer's exclusive remedy under this license agreement shall be, at Diablo's option, either (a) return of the price paid for the software or (b) replacement of the software that does not meet Diablo's Limited Warranty and which is returned to Diablo with a copy of the customer's receipt. Any replacement software will be warranted for the remainder of the original warranty period, or 30 days, whichever is longer. These remedies are not available outside the United States of America.

---

No Liability for Consequential Damages: To the maximum extent permitted by applicable law, in no event shall Diablo be liable for any damages whatsoever (including, without limitation, damages for loss of business profit, business interruption, loss of business information, or any other pecuniary loss) arising out of the use or inability to use the product, even if Diablo has been advised of the possibility of such damages. Because some states/jurisdictions do not allow the exclusion or limitation of liability for consequential or incidental damages, the above limitation may not apply to you.

---

# Contents

- ABB PCCU Connector Plugin** **1**
- Getting Started ..... 1
- Configure ABB PCCU Software ..... 1
  - System Setup ..... 1
  - Configure Output Options ..... 2
- Start Run ..... 5
- Configure EZReporter ..... 7
  - Add an Instrument ..... 7
  - Select the Data System Connector..... 7
  - Configure the Connector ..... 8
  
- Index** **11**



# ABB PCCU Connector Plugin

---

## Getting Started

This document describes how to configure the ABB TotalFlow PCCU data system and the EZReporter 4.0 ABB PCCU Connector Plugin so that results can be processed automatically at the end of each run.

---

## Configure ABB PCCU Software

The Diablo EZReporter software supports automated processing of calibrated peak results generated by the ABB TotalFlow PCCU7 software.

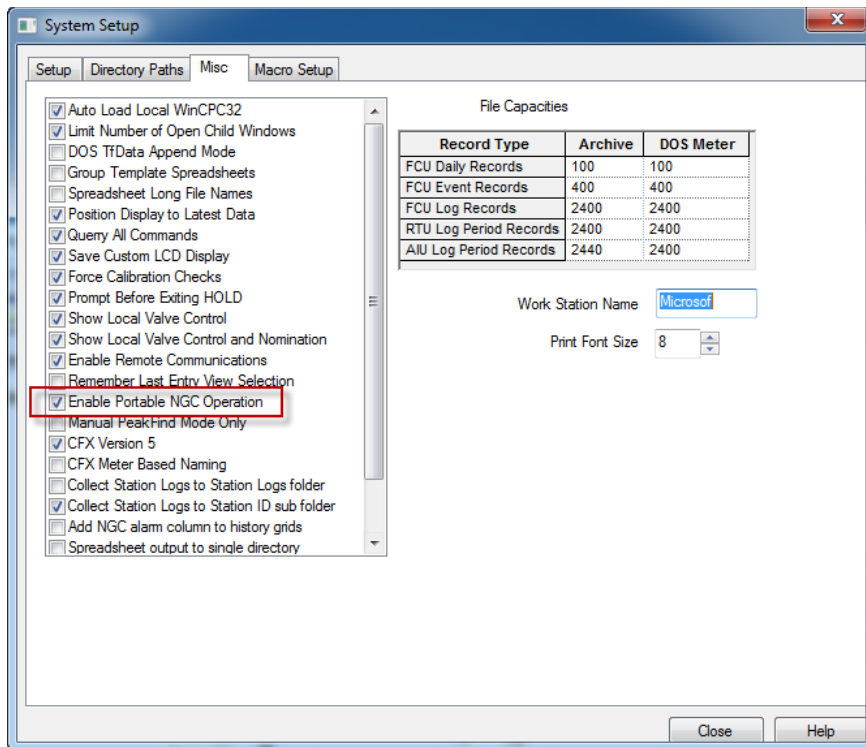
**Important:** In order to process results, you must first make sure that the names in the EZReporter component settings table match the compound names in the ABB PCCU peak/compound tables. For example, if a compound is named "Hexane" in the ABB PCCU calibration table, it must also be entered as "Hexane" in the EZReporter component settings table (not "n-Hexane", or "nC6").

**Note:** If the EZReporter installation program detects the presence of the ABB PCCU software on the computer, it will automatically copy the required batch file, "ezxcopy.bat" to the folder, C:\PCCU7\spreadsh\. If the ABB PCCU software is not detected, then the macro will be installed to the EZReporter installation folder and it will need to be copied manually to the C:\PCCU7\spreadsh\ folder once the ABB PCCU software is installed.

## System Setup

To enable the ABB TotalFlow PCCU software to send results to EZReporter, you must first enable portable NGC operation.

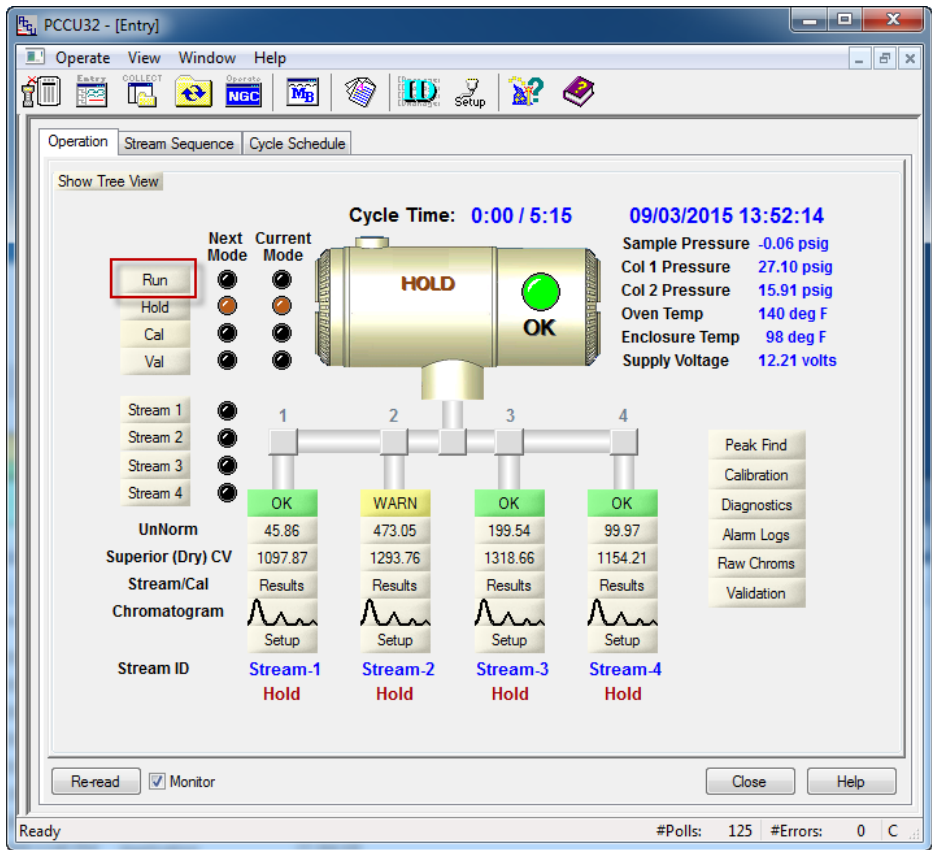
1. Click the PCCU "Setup" toolbar button and switch to the "Misc" tab.
2. Scroll down and check the option, "Enable Portable NGC Operation"
3. Restart the PCCU Software



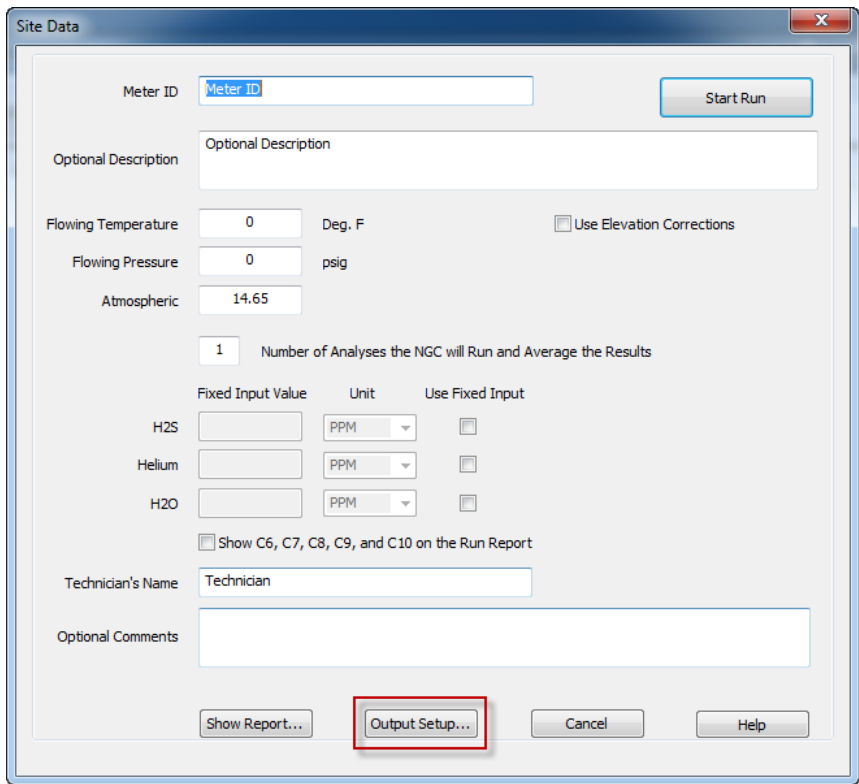
## Configure Output Options

To configure the ABB TotalFlow PCCU software to send results to EZReporter, click the “Entry” toolbar button, and then click the “Run” button:

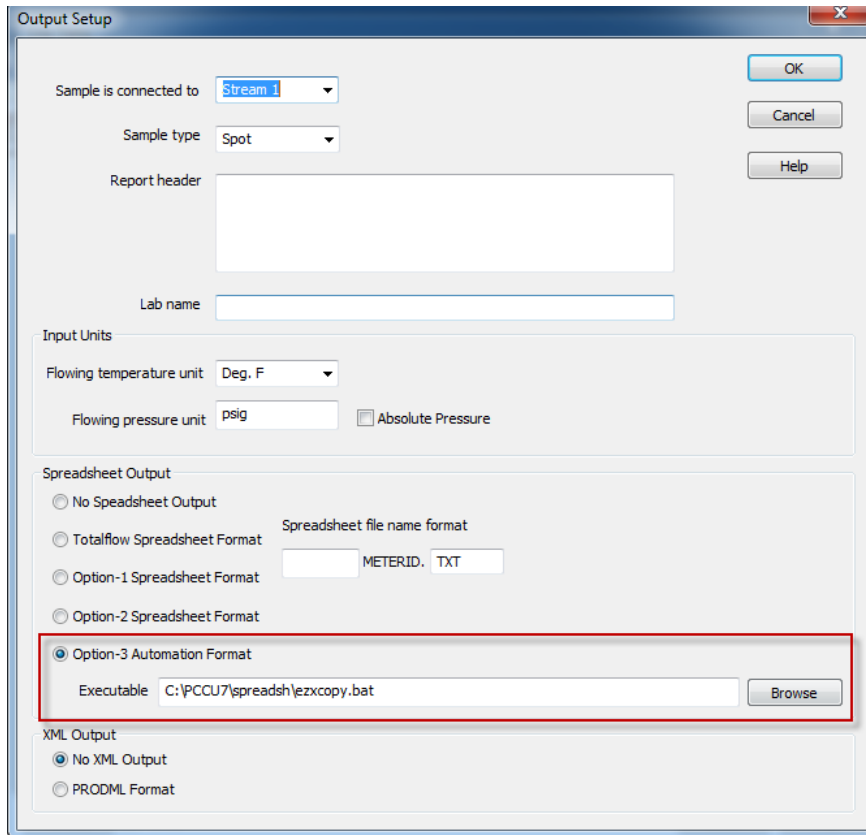




In the "Site Data" window, click the "Output Setup" button:

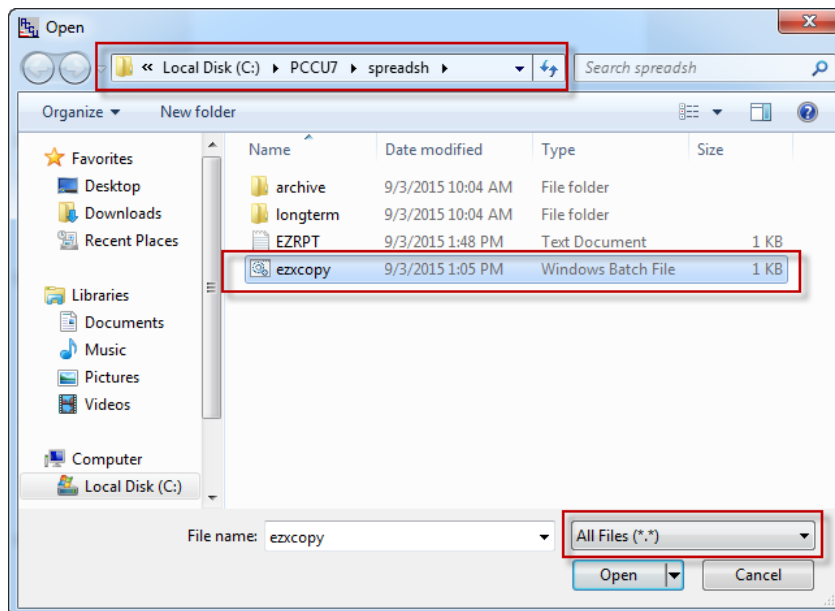


In the “Output Setup” window, click under “Spreadsheet Output”, click “Option-3 Automation Output”:



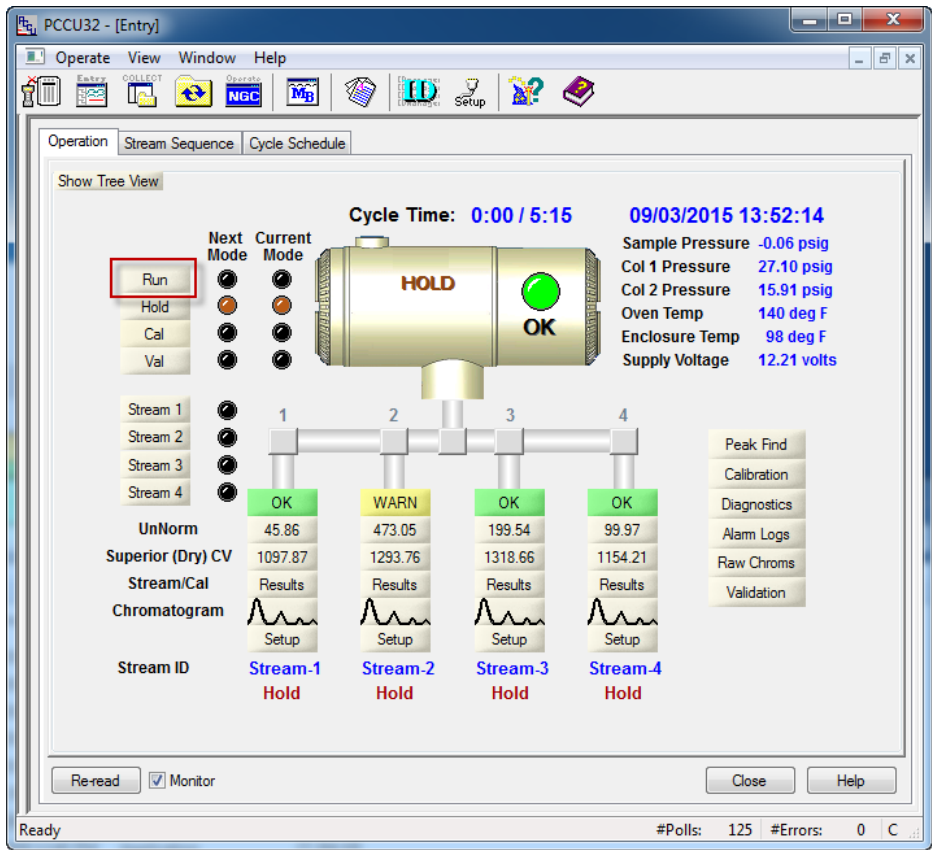
In the “Executable” text box you must enter, “C:\PCCU7\spreadsh\ezxcopy.bat”:

1. Click the “Browse” button
2. In the “Open” window, select the “All Files (\*.\*)” filter
3. Browse to the folder “C:\PCCU7\spreadsh\” and select the file “ezxcopy” and click “Open”.



# Start Run

To start a run click the “Run” button:



In the “Site Data” window enter the Meter ID and other sample information and then click the “Start Run” button.

The 'Site Data' dialog box contains the following elements:

- Meter ID:** A text input field with the placeholder 'Meter ID'.
- Optional Description:** A large text area for entering a description.
- Flowing Temperature:** A text input field with '0' and a unit dropdown set to 'Deg. F'.
- Flowing Pressure:** A text input field with '0' and a unit dropdown set to 'psig'.
- Atmospheric:** A text input field with '14.65'.
- Number of Analyses:** A text input field with '1' and the label 'Number of Analyses the NGC will Run and Average the Results'.
- Fixed Input Value Table:**

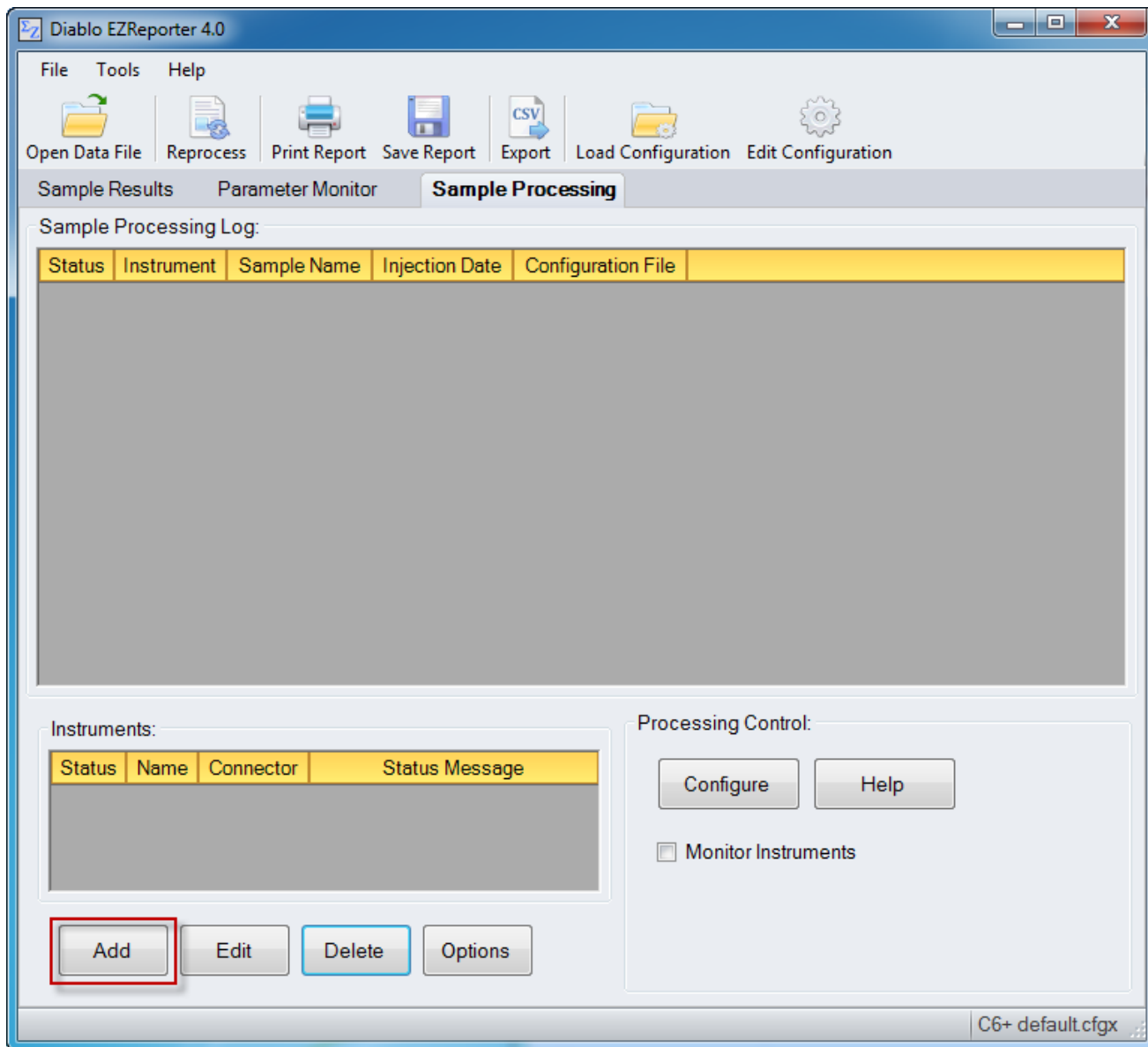
	Fixed Input Value	Unit	Use Fixed Input
H2S	<input type="text"/>	PPM	<input type="checkbox"/>
Helium	<input type="text"/>	PPM	<input type="checkbox"/>
H2O	<input type="text"/>	PPM	<input type="checkbox"/>
- Show C6, C7, C8, C9, and C10 on the Run Report:** A checkbox that is currently unchecked.
- Technician's Name:** A text input field with the placeholder 'Technician'.
- Optional Comments:** A large text area for entering comments.
- Buttons:** 'Start Run' (highlighted with a red box), 'Show Report...', 'Output Setup...', 'Cancel', and 'Help'.

At the end of the run the PCCU software will save the results to the file, “C:\PCCU7\spreadsh\ezrpt.txt” and then start the batch file, “C:\PCCU7\spreadsh\ezxcopy.bat”, which copies the results file to the export folder being monitored by the ABB PCCU Connector.

# Configure EZReporter

## Add an Instrument

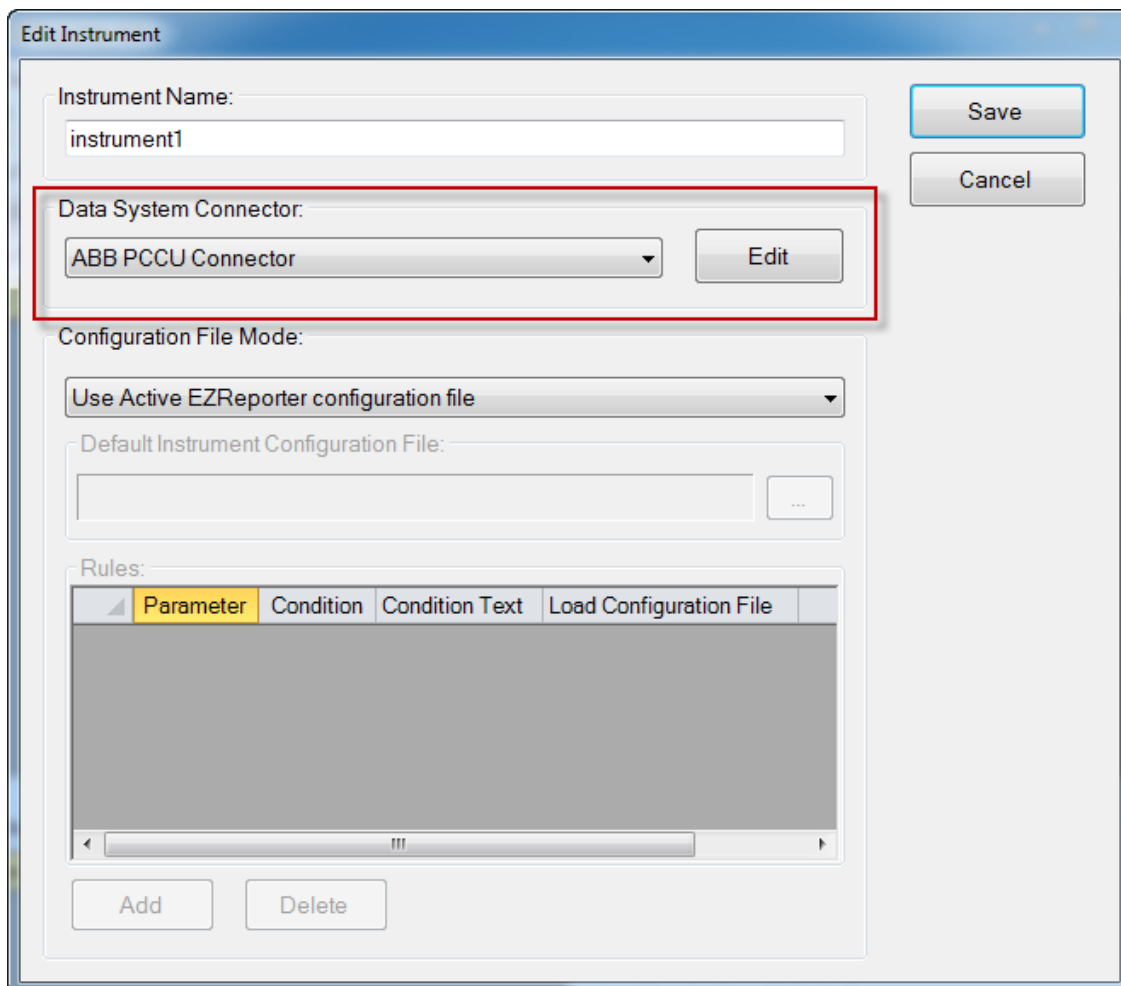
First, you must add and configure an instrument. Switch to the “Sample Processing” tab of the main window, and click the “Add” button below the instruments table.



## Select the Data System Connector

In order to process results from your chromatography data system, you must select the Data System Connector for the data system you are using, and then “Edit” the connector to select and apply any connector-specific settings. Please refer to the reference manual or help file for the particular Data System Connector you are using.

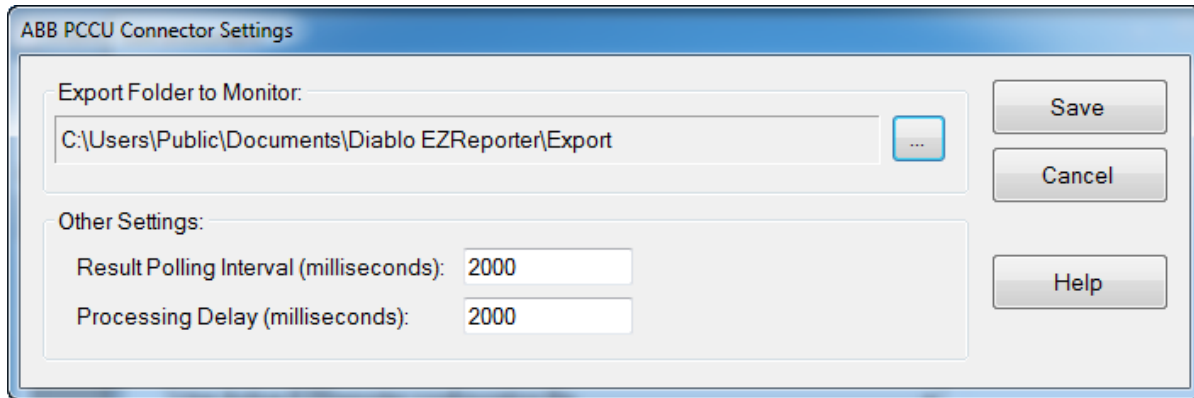
**Important:** The data system connectors available for you to select will be dependent on which version of the installation program you used to install the EZReporter 4.0 software. Make sure that you download the installer version for the manufacturer of the chromatography data system you are using to control your gas chromatograph.



## Configure the Connector

The only setting you typically need to set for the ABB PCCU Connector is the “Export Folder to Monitor”. Unless you are processing results from multiple instruments, you shouldn’t need to change this setting from the default folder.

**Important:** If you change this folder, you will need to edit the batch file, “C:\PCCU7\spreadsh\ezxcopy.bat” so that it copies the results file to the new folder.



### ***Other Settings***

These settings should not need to be changed in a typical installation.

**Result Polling Interval:** This is the interval in milliseconds at which the connector will check the export folder for new text files exported from PCCU. The default value of 2000 milliseconds should be correct for most situations.

**Processing Delay:** After finding new text files in the export folder, the connector will wait for this period in milliseconds before processing results. The default value of 2000 milliseconds should be correct for most situations.





# Index

## A

ABB PCCU Connector Plugin 1  
Add an Instrument 7

## C

Configure ABB PCCU Software 1  
Configure EZReporter 7  
Configure Output Options 2  
Configure the Connector 8

## G

Getting Started 1

## O

Other Settings 9

## S

Select the Data System Connector 7  
Start Run 5  
System Setup 1