

OpenLab CDS Connector Plugin

The screenshot displays the Diablo EZReporter 4.0 software interface. The window title is "Diablo EZReporter 4.0". The menu bar includes "File", "Tools", and "Help". The toolbar contains icons for "Open Data File", "Reprocess", "Print Report", "Save Report", "Export", "Load Configuration", and "Edit Configuration". The main window has four tabs: "Sample Results" (selected), "Parameter Monitor", "Results Database", and "Sample Processing".

Sample Information:

Sample Information	
Sample Name	GPA 2172-09 Calculation Check at 14.696 psia
Report Date	2015-01-27 12:06:23
EZReporter Configuration File	GPA 2172-09 Calculation Check at 14.696 psia.cfgx

Component Results

Component Name	Norm%	Norm Mol% (Sat.)	Norm Mol% (Wet)	Weight% (Dry)	Weight% (Sat.)	Weight% (Wet)	Gross H (BTU / Ide)
Water	0.0000	1.7447	1.6180	0.0000	1.5538	1.4408	
Helium	0.0300	0.0295	0.0295	0.0059	0.0058	0.0058	

Results Summary

Result	Dry	Sat. (Base)	Sat. (Flowing)
Total Raw Mole% (Dry)	100.0000		
Pressure Base (psia)	14.696		
Temperature Base	60.0		

Errors and Warnings

Type	Source	Description

The status bar at the bottom right shows: GPA 2172-09 Calculation Check at 14.696 psia.cfgx

Diablo Analytical EZReporter Software
EZReporter 4.0 Agilent OpenLab CDS Connector Plugin

Copyright 2018, Diablo Analytical, Inc. All rights reserved.

This software and documentation are copyrighted by Diablo Analytical, Inc. All other brands or product names are trademarks or registered trademarks of their respective owners.

Diablo Analytical, Inc.

5141 Lone Tree Way
Antioch, CA 94531

Phone: 925-755-1005

Fax: 925-755-1007

E-mail: support@diabloanalytical.com

Home Page: www.diabloanalytical.com

Manual Revision 20181102-1439

DIABLO ANALYTICAL, INC. SOFTWARE LICENSE AGREEMENT AND LIMITED WARRANTY

LICENSE AGREEMENT

IMPORTANT: Please carefully read the License Agreement below before installing the software. The right to use this software product is sold only on the condition that the customer agrees to the following license. **INSTALLING THE SOFTWARE INDICATES YOUR ACCEPTANCE OF THESE TERMS AND CONDITIONS.**

In return for payment of the one-time license fee for this software product, Customer receives from Diablo Analytical, Inc. (Diablo) a license to use the product subject to the following terms and conditions:

Use: The product may be used one computer or workstation. A separate license agreement and fee is required for each additional computer or workstation on which the product is used. Customer may not reverse assemble, decompile, or modify the software.

Copies: The software product may not be duplicated or copied except for archive purposes, program error verification, or to replace defective media, and all copies made must bear the copyright notices contained in the original.

Ownership: Purchase of this license does not transfer any right, title or interest in the software product to Customer except as specifically set forth in this License Agreement. Customer is on notice that the software product is protected under copyright laws.

Transfer of Rights: This license and the software product may be transferred to a third party, with prior written consent from Diablo, provided the third party agrees to all the terms of this License Agreement and the Customer does not retain any copies of the software product.

Sublicensing and Distribution: Customer may not sublicense the software or distribute copies of the software to the public in physical media or by telecommunication without the prior written consent of Diablo.

Termination: Diablo reserves the right to terminate this license upon breach. In event of termination, Customer will either return all copies of the product to Diablo, or with Diablo's prior consent, provide Diablo with a certificate of destruction of all copies.

Updates and Upgrades: Customer agrees that the software does not include updates and upgrades which may be available from Diablo in a separate support agreement.

Export Restrictions: Customer agrees not to export or re-export the software or any copy in violation of the U.S. Export Administration regulations or other applicable regulation.

LIMITED WARRANTY

Limited Warranty: Diablo warrants that the original disks are free from defects for 90 days from the date of delivery of the software.

No Other Warranties: To the maximum extent permitted by applicable law, Diablo expressly disclaims any warranty for the software product. The software product and any related documentation is provided "as is" without warranty of any kind, either express or implied, including, without limitation, the implied warranties or merchantability of fitness for a particular purpose. The entire risk arising out of use or performance of the software product remains with the customer.

Limitation of Liability and Customer Remedies: Diablo's entire liability and the customer's exclusive remedy under this license agreement shall be, at Diablo's option, either (a) return of the price paid for the software or (b) replacement of the software that does not meet Diablo's Limited Warranty and which is returned to Diablo with a copy of the customer's receipt. Any replacement software will be warranted for the remainder of the original warranty period, or 30 days, whichever is longer. These remedies are not available outside the United States of America.

No Liability for Consequential Damages: To the maximum extent permitted by applicable law, in no event shall Diablo be liable for any damages whatsoever (including, without limitation, damages for loss of business profit, business interruption, loss of business information, or any other pecuniary loss) arising out of the use or inability to use the product, even if Diablo has been advised of the possibility of such damages. Because some states/jurisdictions do not allow the exclusion or limitation of liability for consequential or incidental damages, the above limitation may not apply to you.

Contents

OpenLab CDS Connector Plugin	1
Getting Started	1
Software Requirements	1
Configure OpenLab CDS.....	1
Install the Required Report Templates	1
Configure the Injection Report	3
Configure the EZReporter Instrument	4
Add an Instrument	4
Select the Data System Connector.....	4
Configure the Connector	5
Index	7

OpenLab CDS Connector Plugin

Getting Started

This document describes how to configure the Agilent OpenLab CDS chromatography data system so that results can be processed automatically by EZReporter at the end of each run.

Software Requirements

The EZReporter OpenLab CDS Connector Plugin was designed for Agilent Technologies OpenLab CDS Data Analysis version 2.1 or later.

Note: If you are using either the OpenLab EZChrom or ChemStation chromatography data system, you will need to use the connector plugin designed specifically for each of those data systems.

Configure OpenLab CDS

The Diablo EZReporter software supports automated processing of calibrated external-standard peak and group (summed peak) results generated by Agilent OpenLab CDS Data Analysis.

Important: In order to process results from the OpenLab CDS Data Analysis, you must first make sure that the names in the EZReporter component settings table match the compound names in the OpenLab CDS Compound Table. For example, if a compound is named "Hexane" in the OpenLab CDS Compound Table, it must also be entered as "Hexane" in the component settings table (not "n-Hexane", or "nC6").

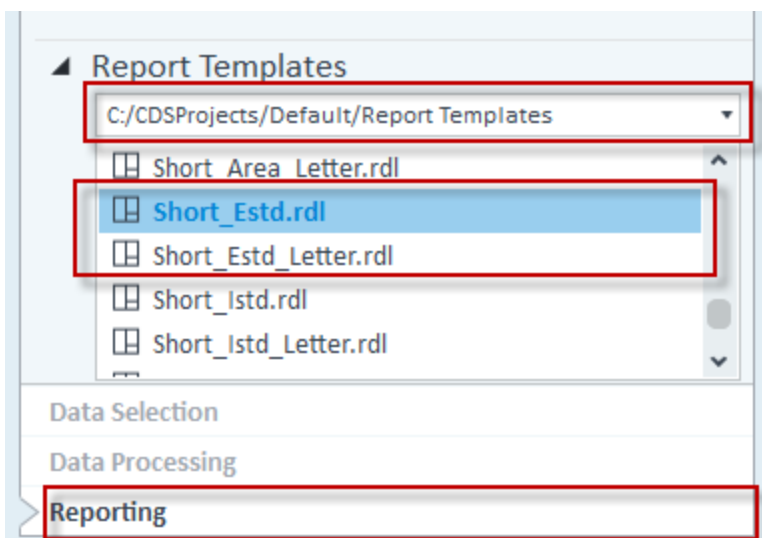
Install the Required Report Templates

The EZReporter OpenLab CDS Connector Plugin reads CSV files exported from OpenLab CDS Data Analysis. The CSV files must be based on the OpenLab CDS "Short_Estd" or "Short_Estd_letter" default report template.

Important: In order for the OpenLab CDS Connector to read the exported CSV file and extract the information correctly, the default report template titles, labels, component tables, and summed peaks table should **not** be modified.

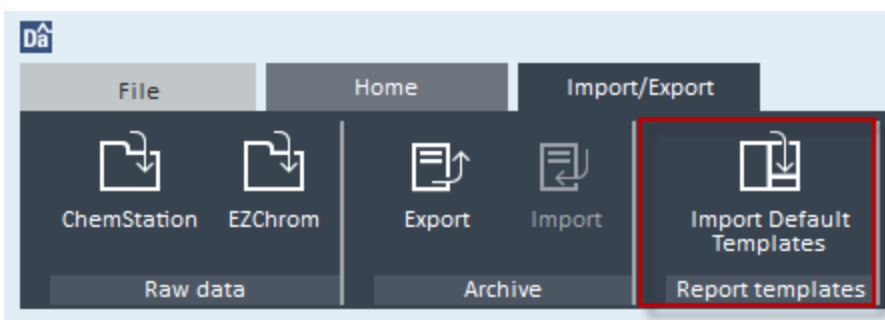
- 1) In OpenLab CDS Data Analysis, switch to the "Reporting" view
- 2) Expand the "Report Templates" option. Select the Report Templates folder for the project you are using and make sure that either "Short_Estd.rdl" or "Short_Estd_Letter.rdl" are listed (Short_Estd.rdl is designed for A4 paper, and Short_Estd_Letter.rdl is designed for Letter sized paper):

Alternatively, you can use the special EZReporter versions of these templates. See "[EZReporter Report Templates](#)" on page 2.



If the required report template is not present, then you will need to install the default report templates:

1. Switch to the “Data Selection” view
2. Select the “Import/Export” tab in the ribbon bar at the top of the window
3. Click the “Import Default Templates” button:



EZReporter Report Templates

When you install EZReporter, special report templates named, “EZReporter.rdl” (for A4 sized paper) and “EZReporter_Letter.rdl” (for letter sized paper), will be saved to either the OpenLab CDS Default Project Report Templates folder, if it exists:

C:\CDSProjects\Default\Report Templates

Or to the EZReporter Program Folder:

C:\Program Files (x86)\Diablo EZReporter 4.0

These OpenLab CDS Report Templates are based on the “Short_Estd.rdl” and “Short_Estd_Letter.rdl” templates with the following changes:

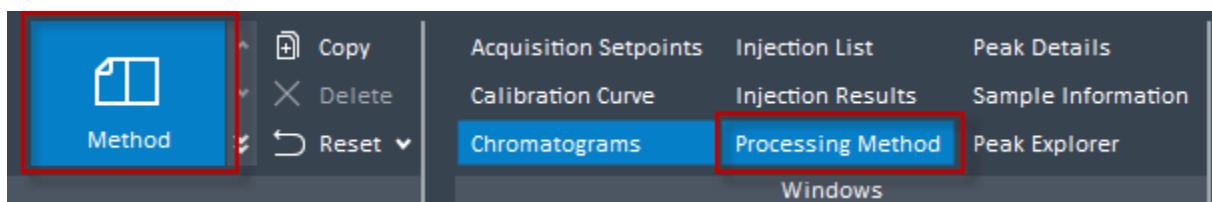
1. The “Sample Description” field has been added to the report header so that it is available in EZReporter.
2. A filter has been removed from the Summed Peaks results that prevented timed group results from being reported in some circumstances. This is especially important for natural gas analysis applications using a timed group for Hexanes Plus.

If you want to take advantage of either of these features, you should copy the desired template to the “Report Templates” folder of your OpenLab CDS project and then specify it as the report template as described below.

Configure the Injection Report

Once you have the required report template installed, you must configure the injection report to save the results to a CSV file as follows.

- 1) Switch to the “Data Processing” view
- 2) Select the “Home” tab in the ribbon bar at the top of the window
- 3) Click the “Method” layout button and make sure that the “Processing Method” window is enabled (highlighted):



- 4) In the “Processing Method” panel, set up the “Injection Report” with the following settings:

Note: You can set up the CSV export in either the “First Report” or “Second Report” section if you want to generate multiple reports after each injection.

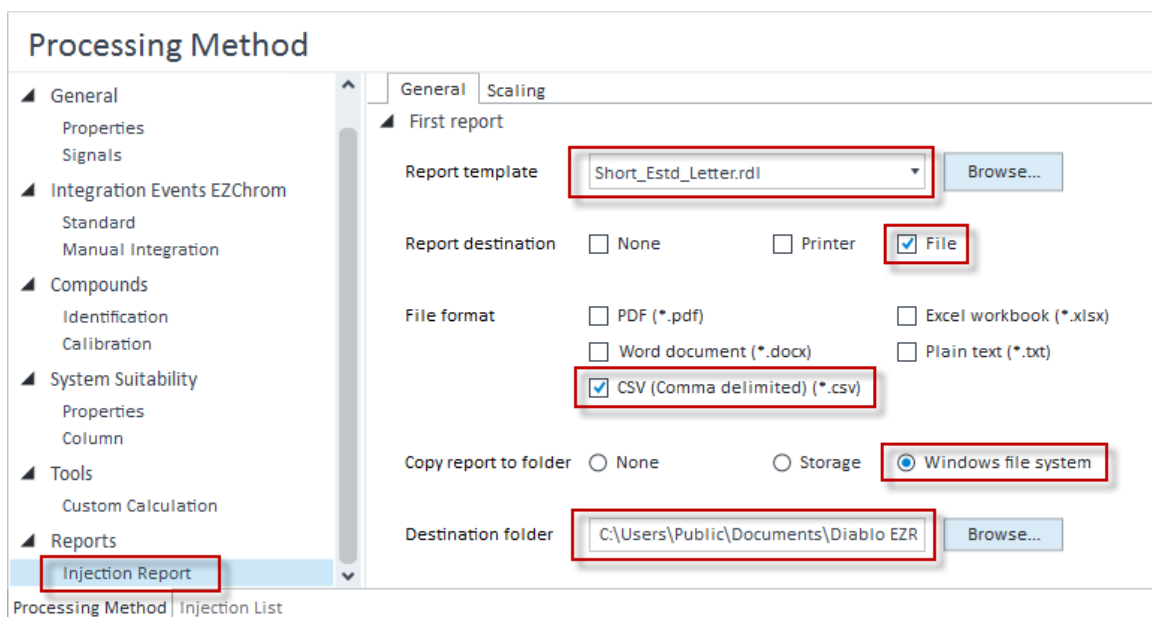
Report template: select “Short_Estd.rdl” (A4 paper), “Short_Estd_letter.rdl” (Letter paper), “EZReporter.rdl” (A4 paper), or “EZReporter_Letter.rdl” (Letter paper).

Report destination: check “File”

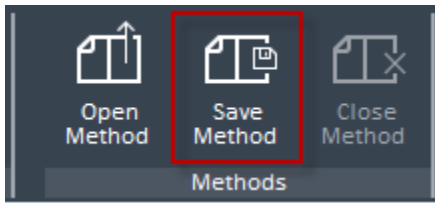
File format: check “CSV (Comma delimited) (*.csv)”

Copy report to folder: Windows file system

Destination folder: C:\Users\Public\Documents\Diablo EZReporter\Export



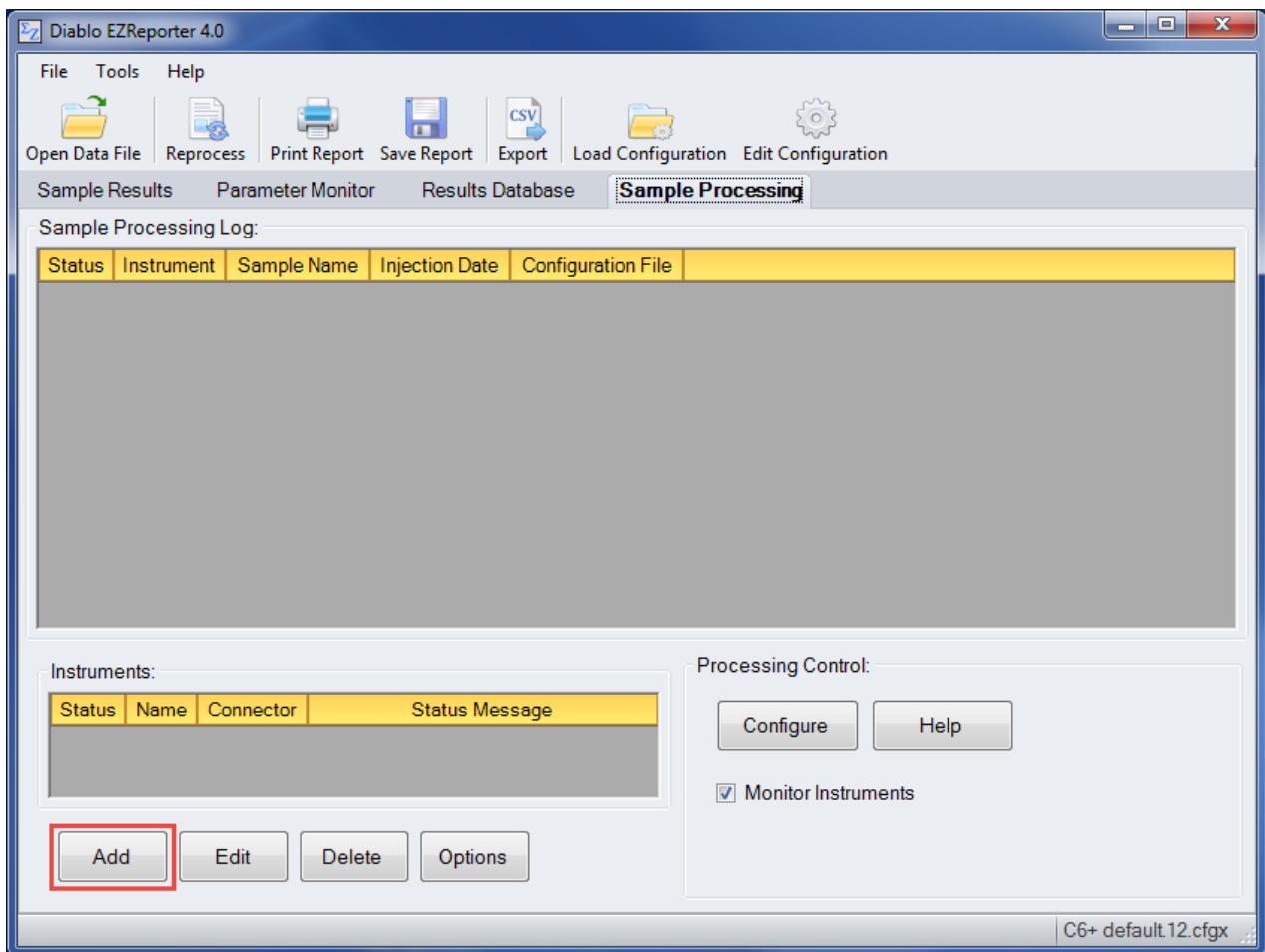
- 5) When you have finished modifying the processing method, make sure to save the method by clicking the “Save Method” button in the ribbon bar at the top of the window:



Configure the EZReporter Instrument

Add an Instrument

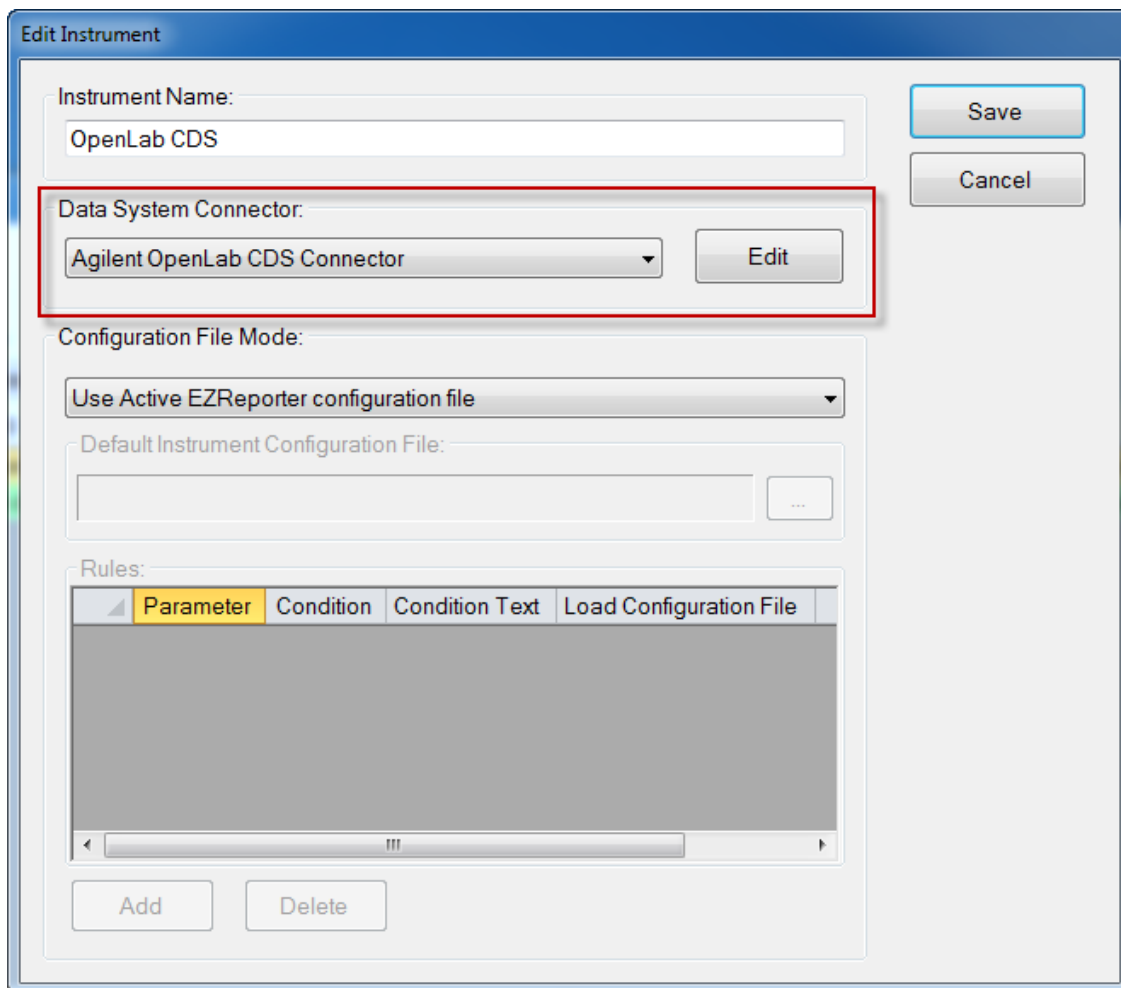
First, you must add and configure an instrument. Switch to the “Sample Processing” tab of the main window, and click the “Add” button below the instruments table.



Select the Data System Connector

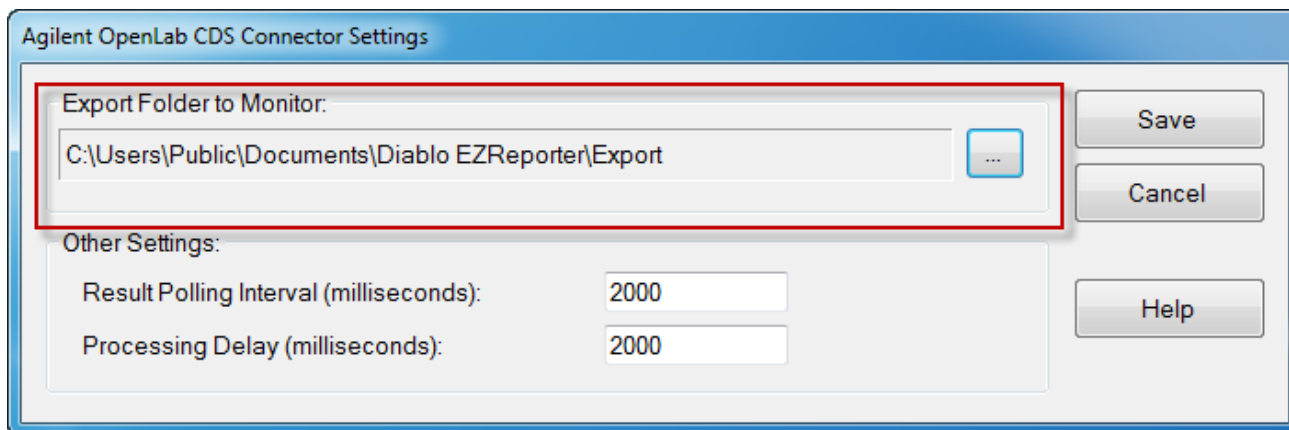
In order to process results from your chromatography data system, you must select the Data System Connector for the data system you are using, and then click the “Edit” button to apply any connector-specific settings. Please refer to the reference manual or help file for the particular Data System Connector you are using.

Important: The data system connectors available for you to select will be dependent on which version of the installation program you used to install the EZReporter 4.0 software. Make sure that you download the installer version for the manufacturer of the chromatography data system you are using to control your gas chromatograph.



Configure the Connector

The only setting you typically need to set for the OpenLab CDS Connector is the “Export Folder to Monitor”. This must match the “Destination Folder” you specified in the OpenLab CDS Data Analysis Injection Report window.



Other Settings

These settings should not need to be changed in a typical installation.

Result Polling Interval: This is the interval in milliseconds at which the connector will check the export folder for new CSV files exported from OpenLab CDS. The default value of 2000 milliseconds should be correct for most situations.

Processing Delay: After finding new text files in the export folder, the connector will wait for this period in milliseconds before processing results. The default value of 2000 milliseconds should be correct for most situations.

Index

A

Add an Instrument 4

C

Configure OpenLab CDS 1
Configure the Connector 5
Configure the EZReporter Instrument 4
Configure the Injection Report 3

E

EZReporter Report Templates 2

G

Getting Started 1

I

Install the Required Report Templates 1

O

OpenLab CDS Connector Plugin 1
Other Settings 6

S

Select the Data System Connector 4
Software Requirements 1