

Compass Connector Plugin

The screenshot displays the main window of the Diablo EZReporter 4.0 software. The interface includes a menu bar (File, Tools, Help), a toolbar with icons for Open Data File, Reprocess, Print Report, Save Report, Export, Load Configuration, and Edit Configuration. The 'Sample Results' tab is active, showing the following sections:

Sample Information:

Sample Information	
Sample Name	GPA 2172-09 Calculation Check at 14.696 psia
Report Date	2015-01-27 12:06:23
EZReporter Configuration File	GPA 2172-09 Calculation Check at 14.696 psia.cfgx

Component Results

Component Name	Norm%	Norm Mol% (Sat.)	Norm Mol% (Wet)	Weight% (Dry)	Weight% (Sat.)	Weight% (Wet)	Gross H (BTU / Ide)
Water	0.0000	1.7447	1.6180	0.0000	1.5538	1.4408	
Helium	0.0300	0.0295	0.0295	0.0059	0.0058	0.0058	

Results Summary

Result	Dry	Sat. (Base)	Sat. (Flowing)
Total Raw Mole% (Dry)	100.0000		
Pressure Base (psia)	14.696		
Temperature Base	60.0		

Errors and Warnings

Type	Source	Description

The status bar at the bottom of the window displays the file path: GPA 2172-09 Calculation Check at 14.696 psia.cfgx

Diablo Analytical EZReporter Software
EZReporter 4.0 Bruker Compass Connector Plugin

Copyright 2016, Diablo Analytical, Inc. All rights reserved.

This software and documentation are copyrighted by Diablo Analytical, Inc. All other brands or product names are trademarks or registered trademarks of their respective owners.

Diablo Analytical, Inc.

5141 Lone Tree Way
Antioch, CA 94531

Phone: 925-755-1005

Fax: 925-755-1007

E-mail: support@diabloanalytical.com

Home Page: www.diabloanalytical.com

Manual Revision 20160401-1104

DIABLO ANALYTICAL, INC. SOFTWARE LICENSE AGREEMENT AND LIMITED WARRANTY

LICENSE AGREEMENT

IMPORTANT: Please carefully read the License Agreement below before installing the software. The right to use this software product is sold only on the condition that the customer agrees to the following license. **INSTALLING THE SOFTWARE INDICATES YOUR ACCEPTANCE OF THESE TERMS AND CONDITIONS.**

In return for payment of the one-time license fee for this software product, Customer receives from Diablo Analytical, Inc. (Diablo) a license to use the product subject to the following terms and conditions:

Use: The product may be used one computer or workstation. A separate license agreement and fee is required for each additional computer or workstation on which the product is used. Customer may not reverse assemble, decompile, or modify the software.

Copies: The software product may not be duplicated or copied except for archive purposes, program error verification, or to replace defective media, and all copies made must bear the copyright notices contained in the original.

Ownership: Purchase of this license does not transfer any right, title or interest in the software product to Customer except as specifically set forth in this License Agreement. Customer is on notice that the software product is protected under copyright laws.

Transfer of Rights: This license and the software product may be transferred to a third party, with prior written consent from Diablo, provided the third party agrees to all the terms of this License Agreement and the Customer does not retain any copies of the software product.

Sublicensing and Distribution: Customer may not sublicense the software or distribute copies of the software to the public in physical media or by telecommunication without the prior written consent of Diablo.

Termination: Diablo reserves the right to terminate this license upon breach. In event of termination, Customer will either return all copies of the product to Diablo, or with Diablo's prior consent, provide Diablo with a certificate of destruction of all copies.

Updates and Upgrades: Customer agrees that the software does not include updates and upgrades which may be available from Diablo in a separate support agreement.

Export Restrictions: Customer agrees not to export or re-export the software or any copy in violation of the U.S. Export Administration regulations or other applicable regulation.

LIMITED WARRANTY

Limited Warranty: Diablo warrants that the original disks are free from defects for 90 days from the date of delivery of the software.

No Other Warranties: To the maximum extent permitted by applicable law, Diablo expressly disclaims any warranty for the software product. The software product and any related documentation is provided "as is" without warranty of any kind, either express or implied, including, without limitation, the implied warranties or merchantability of fitness for a particular purpose. The entire risk arising out of use or performance of the software product remains with the customer.

Limitation of Liability and Customer Remedies: Diablo's entire liability and the customer's exclusive remedy under this license agreement shall be, at Diablo's option, either (a) return of the price paid for the software or (b) replacement of the software that does not meet Diablo's Limited Warranty and which is returned to Diablo with a copy of the customer's receipt. Any replacement software will be warranted for the remainder of the original warranty period, or 30 days, whichever is longer. These remedies are not available outside the United States of America.

No Liability for Consequential Damages: To the maximum extent permitted by applicable law, in no event shall Diablo be liable for any damages whatsoever (including, without limitation, damages for loss of business profit, business interruption, loss of business information, or any other pecuniary loss) arising out of the use or inability to use the product, even if Diablo has been advised of the possibility of such damages. Because some states/jurisdictions do not allow the exclusion or limitation of liability for consequential or incidental damages, the above limitation may not apply to you.

Contents

- Compass Connector Plugin** **1**
- Getting Started 1
- Configure Compass 1
 - Configure Compass for Data Export 1
- Configure the EZReporter Instrument 7
 - Add an Instrument 7
 - Select the Data System Connector..... 8
 - Configure the Connector 8
- Reprocess Results 9

- Index** **13**

Compass Connector Plugin

Getting Started

This document describes how to configure the Bruker Compass chromatography data system and the EZReporter 4.0 Compass Connector Plugin so that results can be processed by EZReporter automatically at the end of each run.

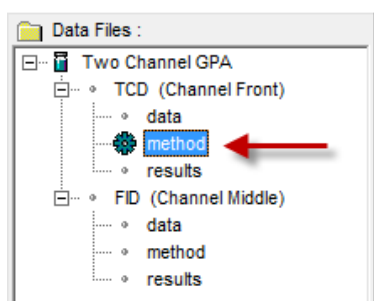
Configure Compass

The Diablo EZReporter software supports automated processing of calibrated, external-standard peak results generated by the Bruker Compass data system. This support is accomplished using the “Export” option of the Compass method settings. This option will export the analysis results to a delimited text file that can then be read and processed by the Bruker Compass Connector Plugin.

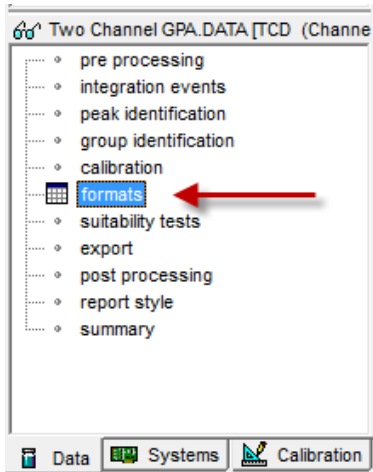
Important: In order to process results from the Bruker Compass data system, you must first make sure that the component names in the EZReporter component settings table match the peak names in the Compass calibration tables. For example, if a compound is named "Hexane" in the Compass calibration table, it must also be entered as "Hexane" in the component settings table (not "n-Hexane", or "nC6").

Configure Compass for Data Export

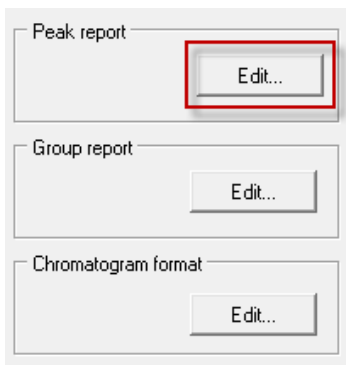
1. Select "Method" for the first Detector Channel (top of the Data Files tree) in the chromatogram or method you want to send results automatically to EZReporter:



2. Select "Formats" from the Method tree:

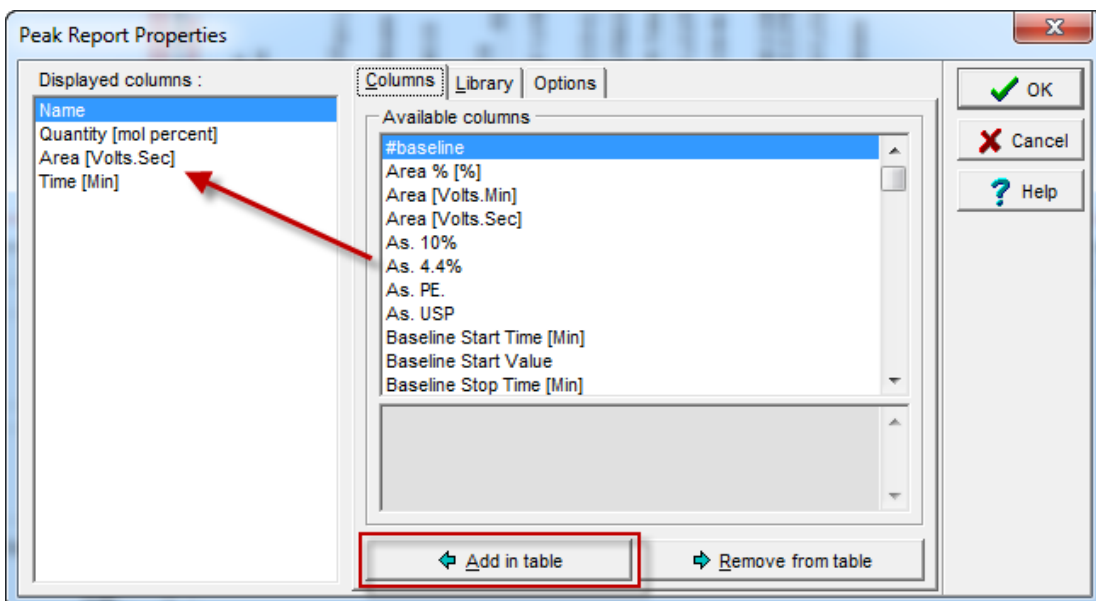


3. Click "Edit" from "Peak report":

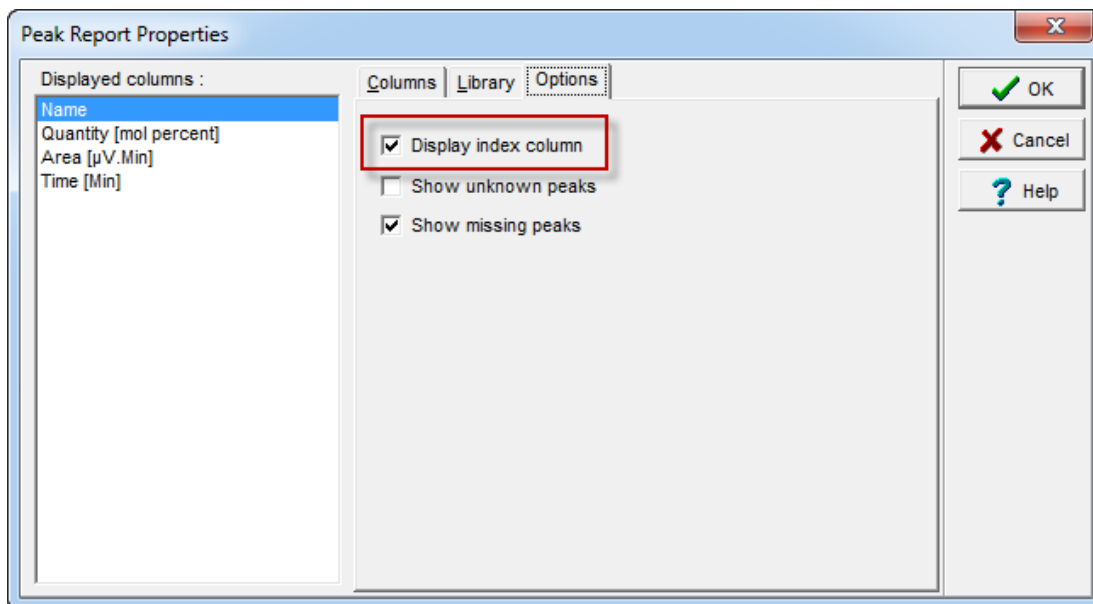


4. From the "Available columns" select in this order: Name, Quantity, Area, Time and then click "Add in table" so they are listed in the order shown under "Displayed columns"

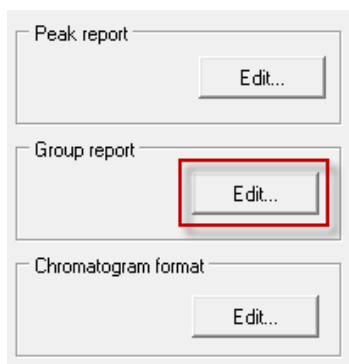
IMPORTANT: The Displayed Columns must be in the order shown, or the results won't be imported into the proper EZReporter result fields.



5. Still in the Peak Report Properties window, switch to the “Options” tab and make sure “Display index column” is checked:



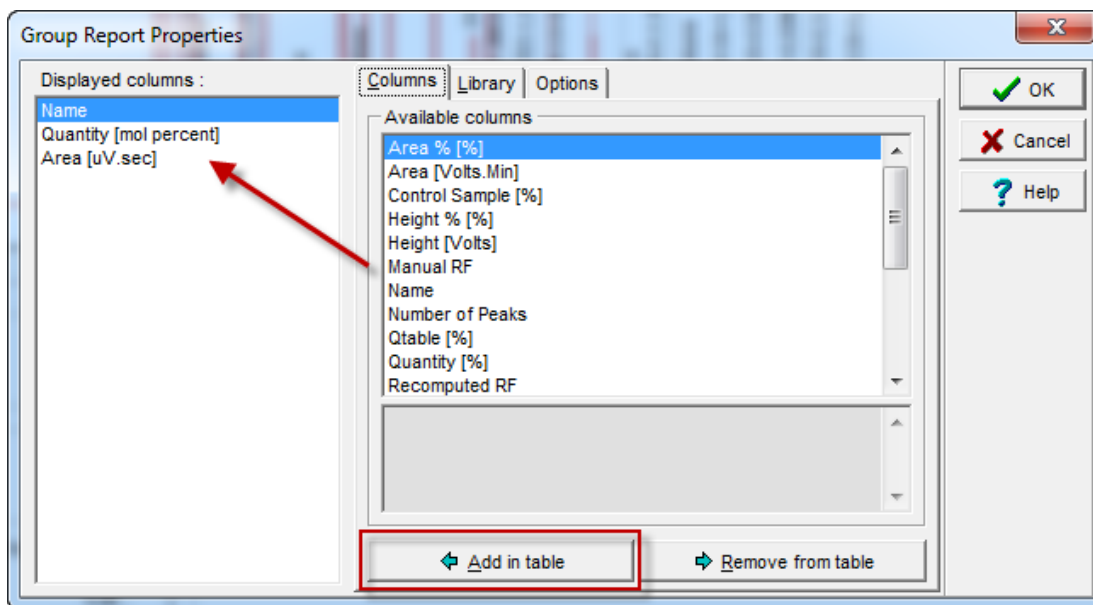
6. If you have groups in your method, click "Edit" from "Group report"



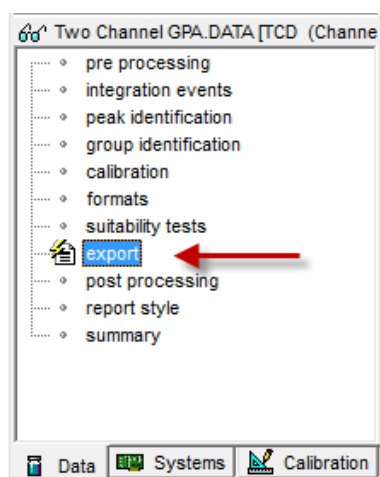
7. From the "Available columns" select in this order: Name, Quantity, Area and then click "Add in table" so they are listed in the order shown under "Displayed columns"

IMPORTANT: The Displayed Columns must be in the order shown, or the results won't be imported into the proper EZReporter result fields.

IMPORTANT: Make sure “Display index column” is also checked in the “Options” tab as described for the Peak Report Properties.



8. Select "export" from the method tree



9. From "Type" select "ASCII" and either a "COMMA" or "TAB" delimiter.

IMPORTANT: If any of your component names include commas, you should select the TAB delimiter.

From "Destination" enter a unique "File name" for this channel, a "Custom" File path, and a "File Ext." of ".TXT". Finally from "Content" check "Peak results", "Group results" (if you have defined one or more groups), and "Variables":

Add Delete

File 1

Type

ASCII Field delimiter: TAB Text delimiter:

RTF Format:

Excel Format: Add new sheet

AIA

Destination

File name: EZReporter-TCD Edit variables...

File path: Custom C:\Temp\EZReports\

File ext.: .TXT

Content

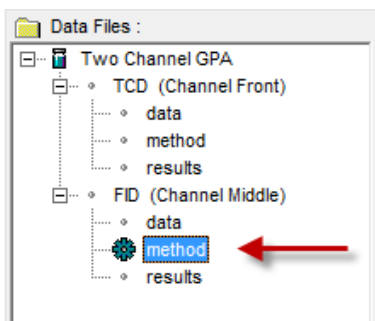
1st Raw data

2nd Peak results

3rd Group results

4th Variables

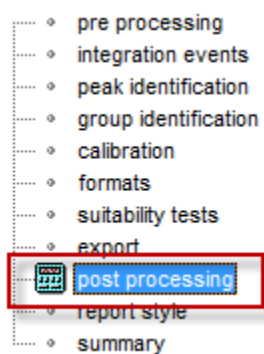
10. Repeat steps 2-9 for all remaining detector channels by clicking "method" in the each channel's section of the Data Files tree.

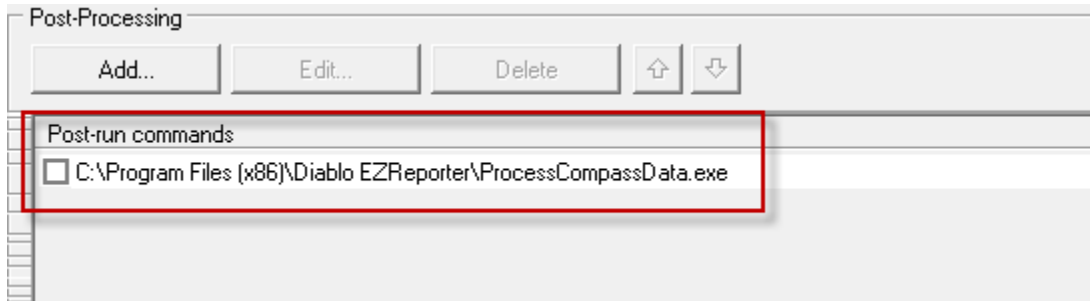


11. All settings should be the same as above for each channel with the exception of the Export Destination File name, which must be different than the filename used for any other channel (see example below).

The screenshot shows the 'File 1' configuration window. The 'Type' section has 'ASCII' selected with a 'Field delimiter' of 'TAB'. The 'Destination' section has 'File name' set to 'EZReporter-FID', 'File path' set to 'C:\Temp\EZReports\' with a folder icon, and 'File ext.' set to '.TXT'. The 'Content' section has '1st' as 'Raw data' (unchecked), '2nd' as 'Peak results' (checked), '3rd' as 'Group results' (checked), and '4th' as 'Variables' (checked). Buttons for 'Add', 'Delete', and 'Edit variables...' are present.

12. **IMPORTANT:** If your method was previously set up to export results to EZReporter 3.0, you will need to disable (uncheck) the Post-run command calling the EZReporter Compass Connector in the Post Processing section of the method:



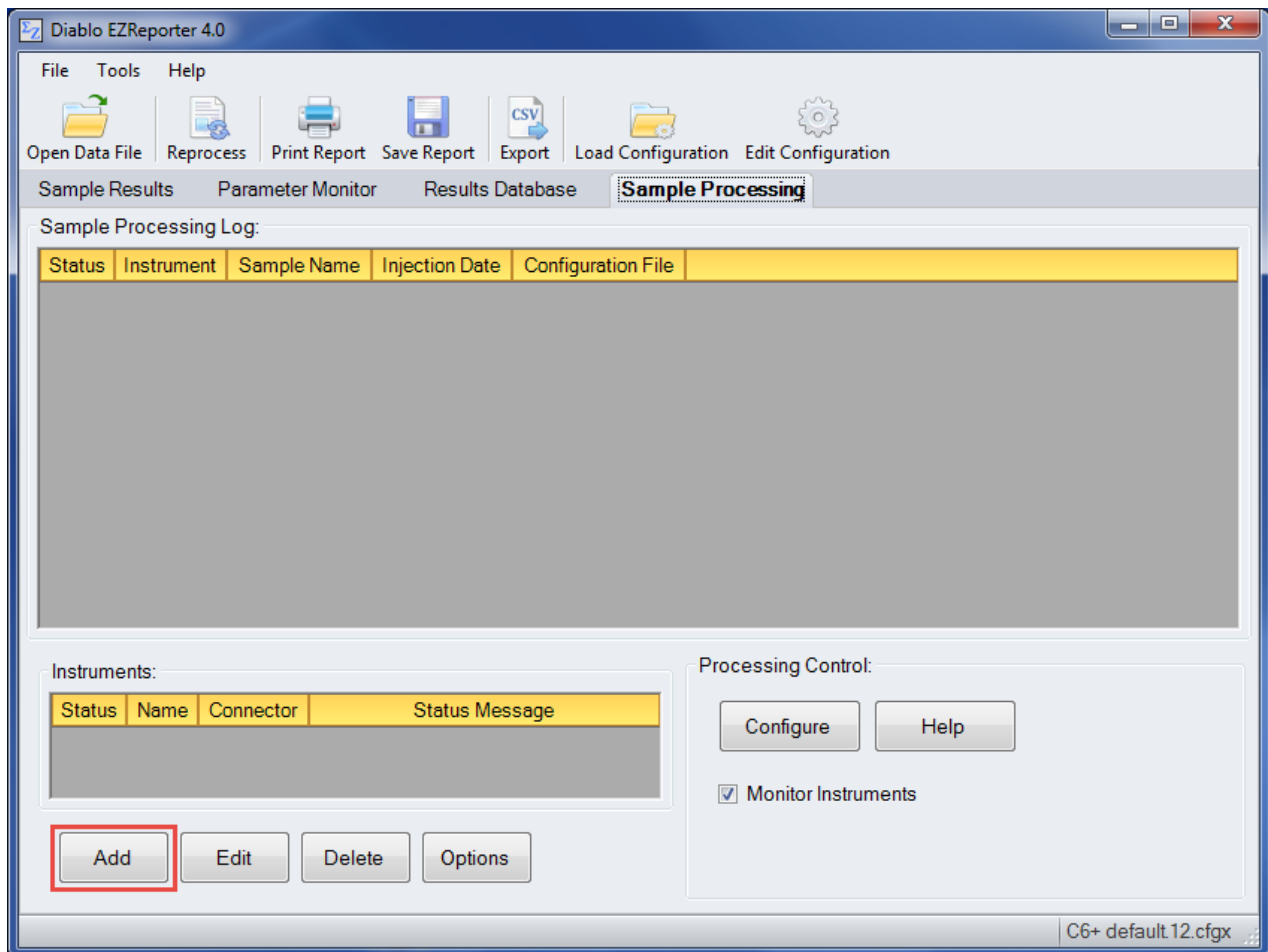


13. Make sure to save your method.

Configure the EZReporter Instrument

Add an Instrument

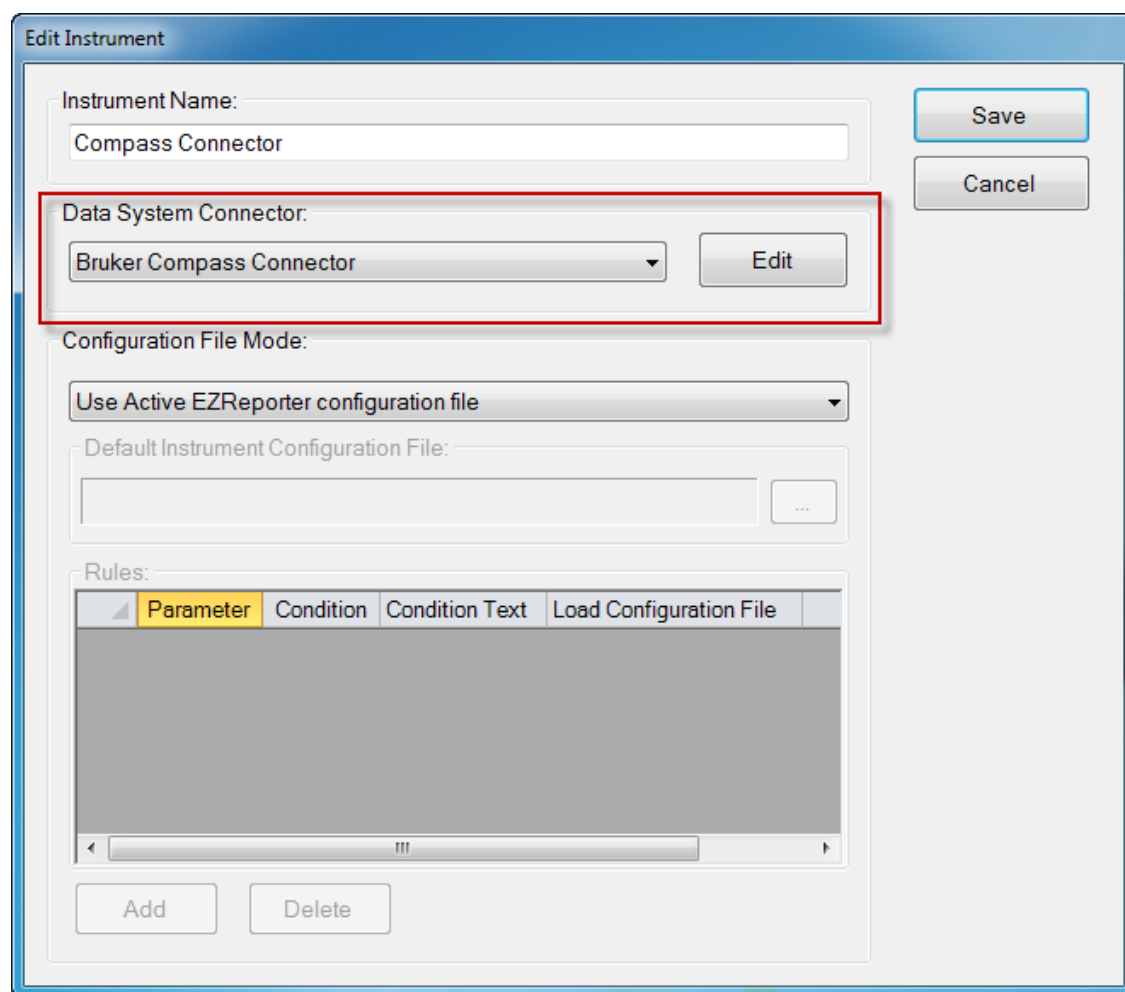
First, you must add and configure an instrument. Switch to the “Sample Processing” tab of the main window, and click the “Add” button below the instruments table.



Select the Data System Connector

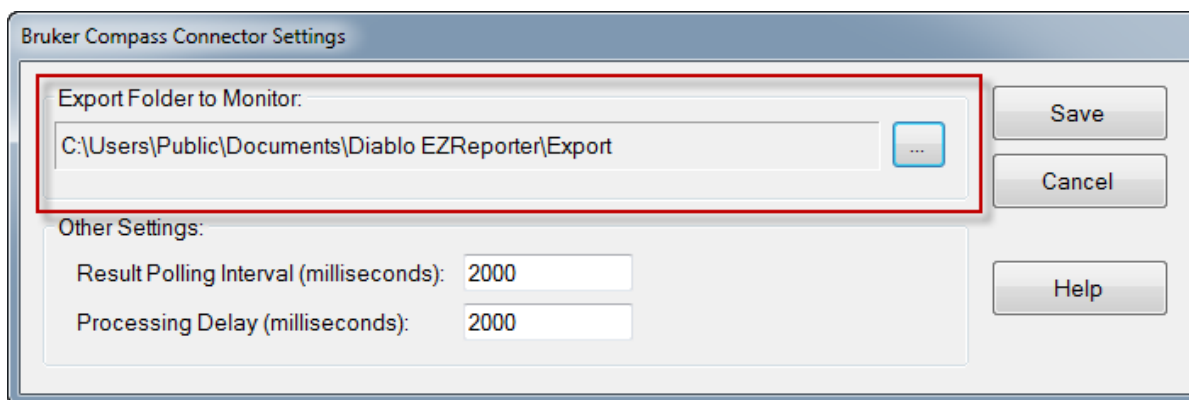
In order to process results from your chromatography data system, you must select the Data System Connector for the data system you are using, and then “Edit” the connector to select and apply any connector-specific settings. In this case, select the “Bruker Compass Connector”.

IMPORTANT: The data system connectors available for you to select will be dependent on which version of the installation program you used to install the EZReporter 4.0 software. Make sure that you download the installer version for the manufacturer of the chromatography data system you are using to control your gas chromatograph.



Configure the Connector

The only setting you typically need to set for the Compass Connector is the “Export Folder to Monitor”. You must choose the same folder that you specify as the Destination File Path in the Compass Export window as described previously.



Note: If you are using a Compass method that was previously configured to export to the folder, “C:\Temp\EZReports”, you can continue to use that folder by selecting it as described above.

Other Settings

These settings should not need to be changed in a typical installation.

Result Polling Interval: This is the interval in milliseconds at which the connector will check the export folder for new text files exported from Compass. The default value of 2000 milliseconds should be correct for most situations.

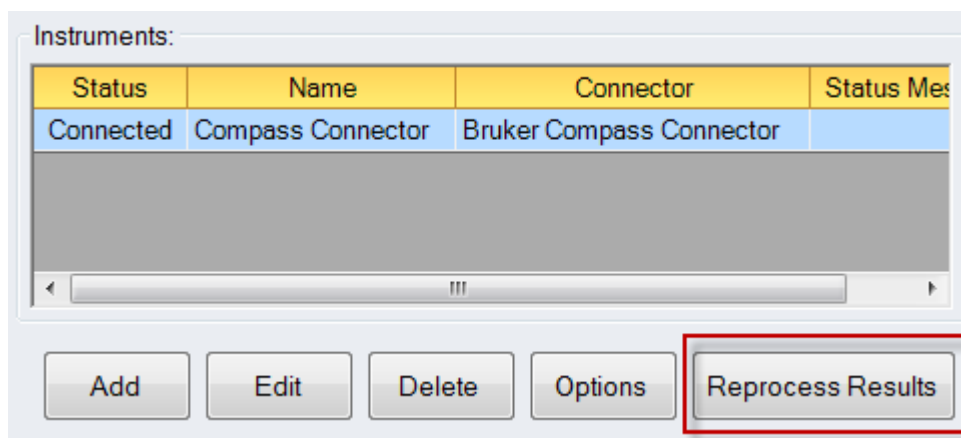
Processing Delay: After finding new text files in the export folder, the connector will wait for this period in milliseconds before processing results. If you have a multi-channel GC, and for some reason Compass is slow to export results for some of the detector channels, then you can increase the delay time to allow all the text files to be generated before processing results. The default value of 2000 milliseconds should be correct for most situations.

Reprocess Results

If your data file contains results from only a **single** detector channel/chromatogram, then you can simply use the Compass “Reprocess” window (click the menu option, “Processing > Reprocess”) to send the results for that channel to EZReporter for processing.

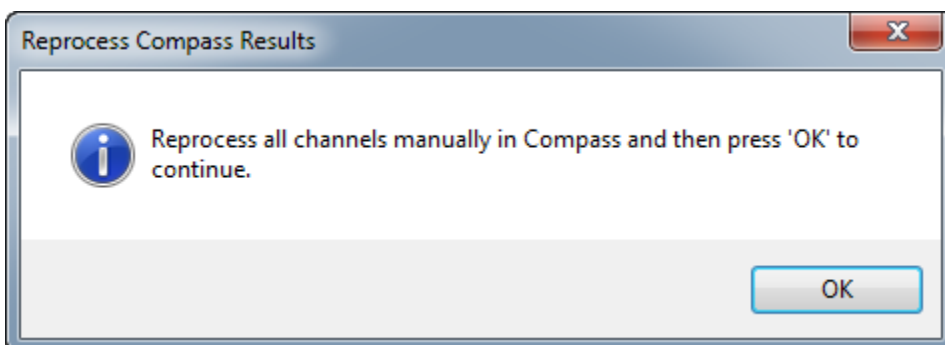
However, if your data file contains results from **2 or more** detector channels/chromatograms, then you should follow these steps:

1. Select the Compass Connector instrument in the instrument table. The “Reprocess Results” button should be displayed at the bottom of the instrument table.

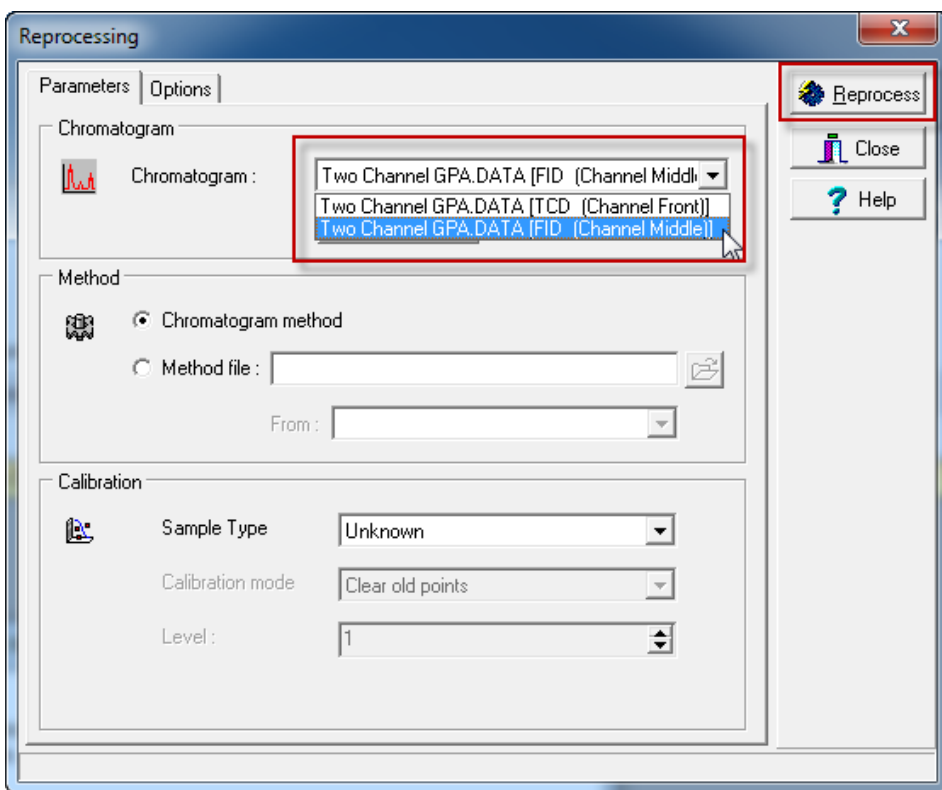


2. Click the “Reprocess Results” button.

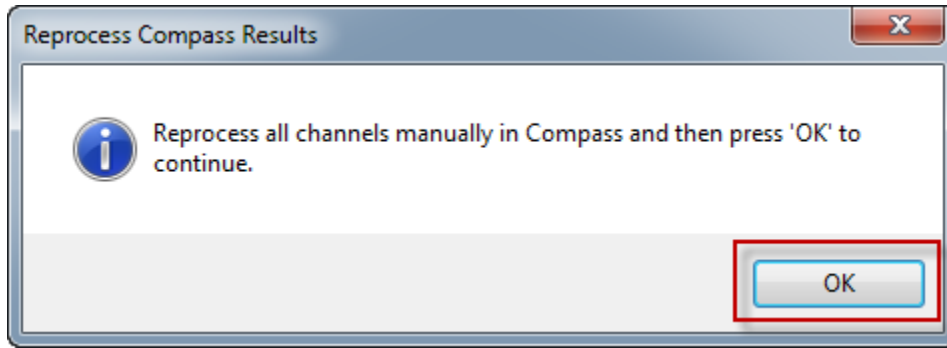
IMPORTANT: Leave the “Reprocess Compass Results” message box open until after you have reprocessed all channels in Compass.



3. Reprocess all channels from the data file in Compass by clicking the menu option, “Processing > Reprocess” and then selecting and reprocessing each chromatogram listed in the “Chromatogram” list box:



4. After reprocessing all channels in the data file, click the “OK” button on the “Reprocess Compass Results” message box displayed in EZReporter:



The Compass Connector will detect and process the text files generated from each channel and add a new result to the Sample Table for processing.

Index

A

Add an Instrument 7

C

Compass Connector Plugin 1

Configure Compass 1

Configure Compass for Data Export 1

Configure the Connector 8

Configure the EZReporter Instrument 7

G

Getting Started 1

O

Other Settings 9

R

Reprocess Results 9

S

Select the Data System Connector 8