

Getting Started Manual

The screenshot displays the Diablo EZReporter 4.0 application window. The interface includes a menu bar (File, Tools, Help), a toolbar with icons for Open Data File, Reprocess, Print Report, Save Report, Export, Load Configuration, and Edit Configuration. The main window is divided into several sections:

- Sample Information:** A table showing details for the current sample.

Sample Information	
Sample Name	GPA 2172-09 Calculation Check at 14.696 psia
Report Date	2015-01-27 12:06:23
EZReporter Configuration File	GPA 2172-09 Calculation Check at 14.696 psia.cfgx
- Component Results:** A table listing the composition of the sample.

Component Name	Norm%	Norm Mol% (Sat.)	Norm Mol% (Wet)	Weight% (Dry)	Weight% (Sat.)	Weight% (Wet)	Gross H (BTU / Ide)
Water	0.0000	1.7447	1.6180	0.0000	1.5538	1.4408	
Helium	0.0300	0.0295	0.0295	0.0059	0.0058	0.0058	
- Results Summary:** A table providing key summary values.

Result	Dry	Sat. (Base)	Sat. (Flowing)
Total Raw Mole% (Dry)	100.0000		
Pressure Base (psia)	14.696		
Temperature Base	60.0		
- Errors and Warnings:** A table with columns for Type, Source, and Description, currently empty.

The status bar at the bottom of the window displays the file path: GPA 2172-09 Calculation Check at 14.696 psia.cfgx.

Diablo EZReporter 4.0
Getting Started Manual

Copyright 2018, Diablo Analytical, Inc. All rights reserved.

This software and documentation are copyrighted by Diablo Analytical, Inc. All other brands or product names are trademarks or registered trademarks of their respective owners.

Diablo Analytical, Inc.

5141 Lone Tree Way
Antioch, CA 94531

Phone: 925-755-1005
Fax: 925-755-1007

E-mail: support@diabloanalytical.com
Home Page: www.diabloanalytical.com

Manual Revision 20180316-1414

DIABLO ANALYTICAL, INC. SOFTWARE LICENSE AGREEMENT AND LIMITED WARRANTY

LICENSE AGREEMENT

IMPORTANT: Please carefully read the License Agreement below before installing the software. The right to use this software product is sold only on the condition that the customer agrees to the following license. **INSTALLING THE SOFTWARE INDICATES YOUR ACCEPTANCE OF THESE TERMS AND CONDITIONS.**

In return for payment of the one-time license fee for this software product, Customer receives from Diablo Analytical, Inc. (Diablo) a license to use the product subject to the following terms and conditions:

Use: The product may be used one computer or workstation. A separate license agreement and fee is required for each additional computer or workstation on which the product is used. Customer may not reverse assemble, decompile, or modify the software.

Copies: The software product may not be duplicated or copied except for archive purposes, program error verification, or to replace defective media, and all copies made must bear the copyright notices contained in the original.

Ownership: Purchase of this license does not transfer any right, title or interest in the software product to Customer except as specifically set forth in this License Agreement. Customer is on notice that the software product is protected under copyright laws.

Transfer of Rights: This license and the software product may be transferred to a third party, with prior written consent from Diablo, provided the third party agrees to all the terms of this License Agreement and the Customer does not retain any copies of the software product.

Sublicensing and Distribution: Customer may not sublicense the software or distribute copies of the software to the public in physical media or by telecommunication without the prior written consent of Diablo.

Termination: Diablo reserves the right to terminate this license upon breach. In event of termination, Customer will either return all copies of the product to Diablo, or with Diablo's prior consent, provide Diablo with a certificate of destruction of all copies.

Updates and Upgrades: Customer agrees that the software does not include updates and upgrades which may be available from Diablo in a separate support agreement.

Export Restrictions: Customer agrees not to export or re-export the software or any copy in violation of the U.S. Export Administration regulations or other applicable regulation.

LIMITED WARRANTY

Limited Warranty: Diablo warrants that the original disks are free from defects for 90 days from the date of delivery of the software.

No Other Warranties: To the maximum extent permitted by applicable law, Diablo expressly disclaims any warranty for the software product. The software product and any related documentation is provided "as is" without warranty of any kind, either express or implied, including, without limitation, the implied warranties or merchantability of fitness for a particular purpose. The entire risk arising out of use or performance of the software product remains with the customer.

Limitation of Liability and Customer Remedies: Diablo's entire liability and the customer's exclusive remedy under this license agreement shall be, at Diablo's option, either (a) return of the price paid for the software or (b) replacement of the software that does not meet Diablo's Limited Warranty and which is returned to Diablo with a copy of the customer's receipt. Any replacement software will be warranted for the remainder of the original warranty period, or 30 days, whichever is longer. These remedies are not available outside the United States of America.

No Liability for Consequential Damages: To the maximum extent permitted by applicable law, in no event shall Diablo be liable for any damages whatsoever (including, without limitation, damages for loss of business profit, business interruption, loss of business information, or any other pecuniary loss) arising out of the use or inability to use the product, even if Diablo has been advised of the possibility of such damages. Because some states/jurisdictions do not allow the exclusion or limitation of liability for consequential or incidental damages, the above limitation may not apply to you.

Contents

Getting Started	1
Introduction	1
System Requirements	1
Windows 10 Compatibility.....	1
Windows Screen Resolution.....	1
Chromatography Data Systems	2
EZReporter 3.0 Compatibility	2
EZReporter 3.0 Configuration Files	2
Installation	2
EZReporter Manuals and Help	3
Software Licensing and Activation.....	4
Quick Start Instructions	5
Index	11

Getting Started

Introduction

This Getting Started manual is intended to provide instructions on installing and performing the initial configuration of the Diablo Analytical EZReporter 4.0 software.

Please refer to the EZReporter Reference Manual for details about configuring EZReporter's many features and options. If you are upgrading from EZReporter 3.0, you can also refer to the Upgrade Guide included in the distribution.

System Requirements

The Full .NET 4.0 Framework must be installed before trying to run EZReporter 4.0. The .NET Framework will be installed automatically, if necessary, when you install the software from the distribution CD or use the single-file installer. If you use the web-based installer the .NET 4.0 Framework will be downloaded automatically if necessary. You can also download and install the .NET 4.0 Framework from Microsoft using the following link:

<http://www.microsoft.com/en-us/download/details.aspx?id=17718>

Windows 10 Compatibility

EZReporter 4.0 has been tested under Windows 10, and no significant issues have been identified to date. However at this time many of the chromatography data systems used to control the Gas Chromatographs and provide raw component results to EZReporter are not yet compatible with Windows 10. It is important that you check with the vendor of your chromatography data system before attempting to upgrade to Windows 10.

Windows Screen Resolution

The software is designed to run best with the Windows screen resolution set to 100%. We have made our best effort to ensure the software will run correctly on higher resolution displays, but if you have the screen resolution set to "Medium" (125%) or "Larger" (150%) or any scaling factor > 100%, some of the controls and windows may not display optimally.

Windows 7: right-click the desktop and select "Screen Resolution" from the popup menu. Then choose the link, "Make text and other items larger or smaller". Choose, "Smaller (100%)".

Windows 10: Right-click the desktop and select "Display Settings" from the popup menu. Click the "Advanced Display Settings" option and then "Advanced sizing of text and other items". Click the "Set a custom scaling level" link and then set "Scale to this percentage of normal size: 100%".

Chromatography Data Systems

In order for EZReporter 4.0 to process results automatically from a particular chromatography data system, a “Connector Plugin” must be written for that data system. Please refer to the EZReporter release notes for the current list of supported data systems, or contact Diablo Analytical for more information.

EZReporter 3.0 Compatibility

EZReporter 4.0 was designed so that it can be installed on the same computer as an existing EZReporter 3.0 installation. The two programs can be run side-by-side. EZReporter 4.0 can open EZReporter 3.0 configuration and data files.

Note: you may need to make changes to the settings of the chromatography data system you are using in order to switch automatic processing back and forth between EZReporter 3.0 and 4.0. Refer to the documentation for the connector plug-in for your chromatography data system for more information.

EZReporter 3.0 Configuration Files

If you open an EZReporter 3.0 configuration file in EZReporter 4.0, it will be converted to the EZReporter 4.0 format and saved with the same name in the EZReporter 4.0 settings folder. You should review the results generated by the converted configuration file and confirm that reports and exported text files are correct for your application. The converted files should produce equivalent results, but depending on the program features used, there may be some additional editing required.

Known Compatibility Issues

The following are the known compatibility issues with converted EZReporter 3.0 configuration files.

1. **Export Templates:** If you use custom format strings for date/time export variables (InjectionTime, for example), you may have to change the format string. See “Export Template Format” in the reference manual for more information.
2. **Export Templates:** Custom format strings for text export variables (SampleName, for example) are no longer supported. You can use the new fixed-length field export capability to achieve the same results. See “Export Template Format” in the reference manual for more information.

Installation

EZReporter 4.0 is installed by running the setup program on the distribution flash drive/CD, or the installation program downloaded from our web site.

Important: You must be logged on with Administrator privileges when you install EZReporter (but you can run the software thereafter as a standard user)

There are two different versions of the EZReporter installation program that can be downloaded from our web site:

1. A web-based installer that should be used to update an existing installation of EZReporter 4.0 or to install the software on a computer that has Internet access. This version of the installer will download the required .NET 4.0 Framework files automatically over the Internet if required.
2. A single-file installer that should be used to install EZReporter on a computer with no access to the Internet. This version of the installer includes the full .NET 4.0 Framework and is consequently much larger in size.

Data System Support

Make sure you download the version of the installation program that includes the data system connectors for the manufacturer of the chromatography data system you will be using to control your gas chromatograph.

Installation and System Directories

EZReporter 4.0 uses the following folders to store the various EZReporter program, data, configuration, and support files (these folders have changed from those used for EZReporter 3.0).

Note: You can access and browse these folders using the “Tools > Browse EZReporter System Folders” menu option.

Program Folder: Contains the EZReporter program executable, required libraries and other read-only support files. The end user should not modify any files in this folder directly.

C:\Program Files (x86)\Diablo EZReporter 4.0

Default Files Folder: Contains configuration template files (.CFGT), and example export and import templates.

C:\ProgramData\Diablo Analytical\EZReporter\Default Files

Settings Folder: Contains the EZReporter configuration files (.CFG).

C:\Users\Public\Documents\Diablo EZReporter\Settings

Default Data Folder: Contains EZReporter data files and is the default location for export text files.

C:\Users\Public\Documents\Diablo EZReporter\Data

ProgramData Folder: Contains log files, and other support files that don't need to be accessed directly by the end user.

C:\ProgramData\Diablo Analytical\EZReporter

Common Documents Folder: this folder contains all of the files that the end user should have to access on a regular basis. It includes the “Settings” folder, the “Data” folder, the “Backup” folder, and the results database file.

C:\Users\Public\Documents\Diablo EZReporter

EZReporter Manuals and Help

This “Getting Started” manual will help you with the initial familiarization and configuration of the EZReporter 4.0 software. Depending on the program edition and add-on modules you have purchased, you may also need to refer to additional manuals and help files included with the software in order to complete the setup and configuration of the software for your application.

Help files can be accessed from the “Help” option of the main program menu. There are also context sensitive “Help” buttons displayed on many of the program windows.

PDF versions of all manuals, including manuals for the installed connector plugins are located in the “Manuals” folder of the EZReporter installation folder and can be accessed easily via the “Help” menu (Help > View Software Manuals).

Note: Manuals and corresponding help files are identical in content.

All Editions:

Refer to the **EZReporter 4.0 Reference Manual** for information on configuring the standard program options.

Natural Gas Analysis (NGA) and Natural Gas Liquids (NGL) Modules:

Refer to the **NGA and NGL Modules** manual for information on configuring and generating natural gas analysis reports.

Results Database Module:

Refer to the **Results Database Module** manual for information on configuring and using the optional Results Database.

Modbus Module

Refer to the **Modbus Module** manual for information on configuring and using the optional Modbus Module.

Data System Connector:

Refer to the manual for the “Connector” plugin for your chromatography data system to set up EZReporter to process results automatically at the end of your GC run. Help files for specific connector plugins can be accessed either from the

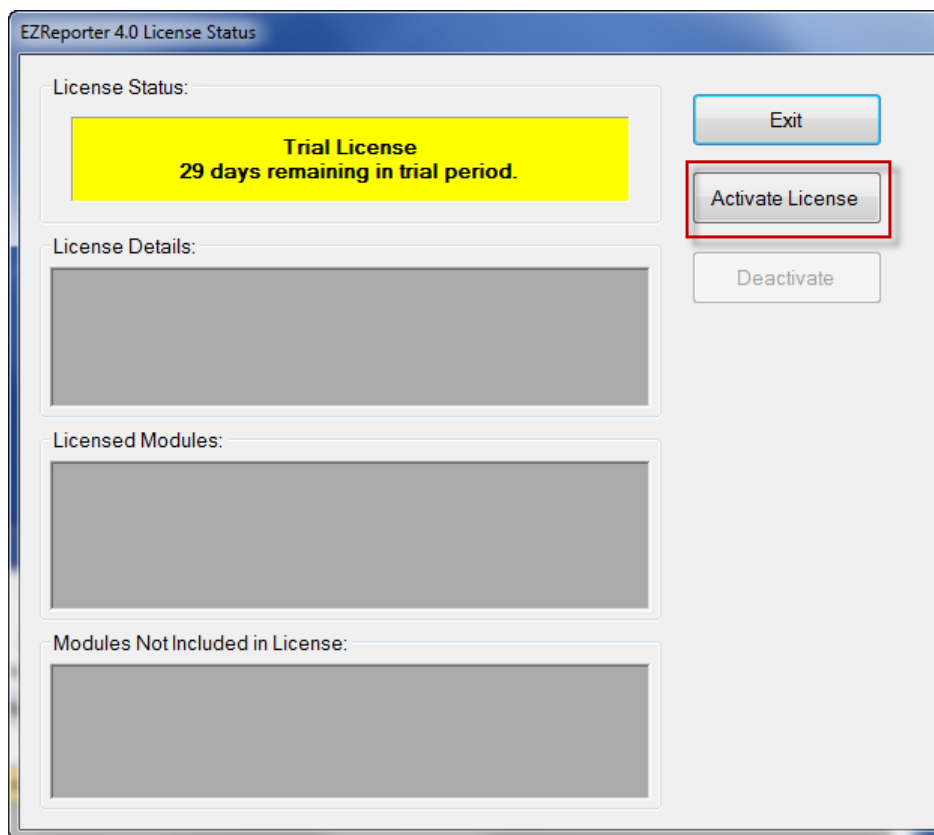
“Help” button on connector’s “Edit” window, or by right-clicking the corresponding instrument in the instrument table on the Sample Processing tab, and selecting the “Help” option.

Software Licensing and Activation

When you run EZReporter 4.0 for the first time, you will have a trial license that allows you to use and evaluate all of the program modules for up to 30 days. The program is fully-functional during the trial period. In order to continue using the software after the 30-day trial period, you must purchase a license for the desired program modules, and then activate the software.

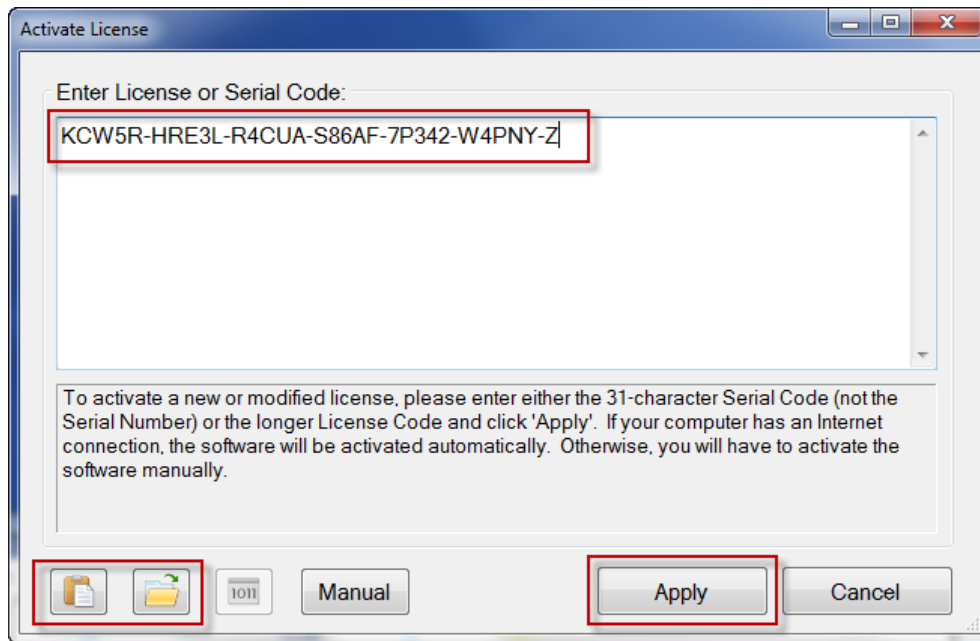
Important: Once the software has been activated, only the modules that were included in the license you purchased will be available.

To activate your license, click the “Activate License” button on the License Status window that is displayed when you start the software or when you click the menu option, “Help > License Status...”.



When you purchase your software license, you will receive a 31-character Serial License Code (this is different than the shorter Serial Number). To activate the software, you must enter that License Code into the text box on the “Activate License” window. If you copy the Serial License Code to the Windows Clipboard from an email message, you can paste into the text box using the “Paste” button. Alternatively, if you received a text file containing the Serial License Code, you can load it using the “File Open” button.

Note: If you received a distribution USB flash drive, a text file containing your serial license code may be saved on the flash drive.



After entering the Serial License Code, click the “Apply” button. If your computer is connected to the Internet, the software will contact the License Server and automatically activate the software.

If your computer is not connected to the Internet, or if there is a problem contacting the License Server, then you will need to activate the software manually by clicking the “Manual” button and following the instructions.

After activating your license, EZReporter functionality will reflect the program modules that you licensed.

Refer to the EZReporter Software License Guide for more information about licensing and activation.

Note: An Internet connection is only required when applying an activation code or deactivating the software. No Internet connection is required during normal operation of the software.

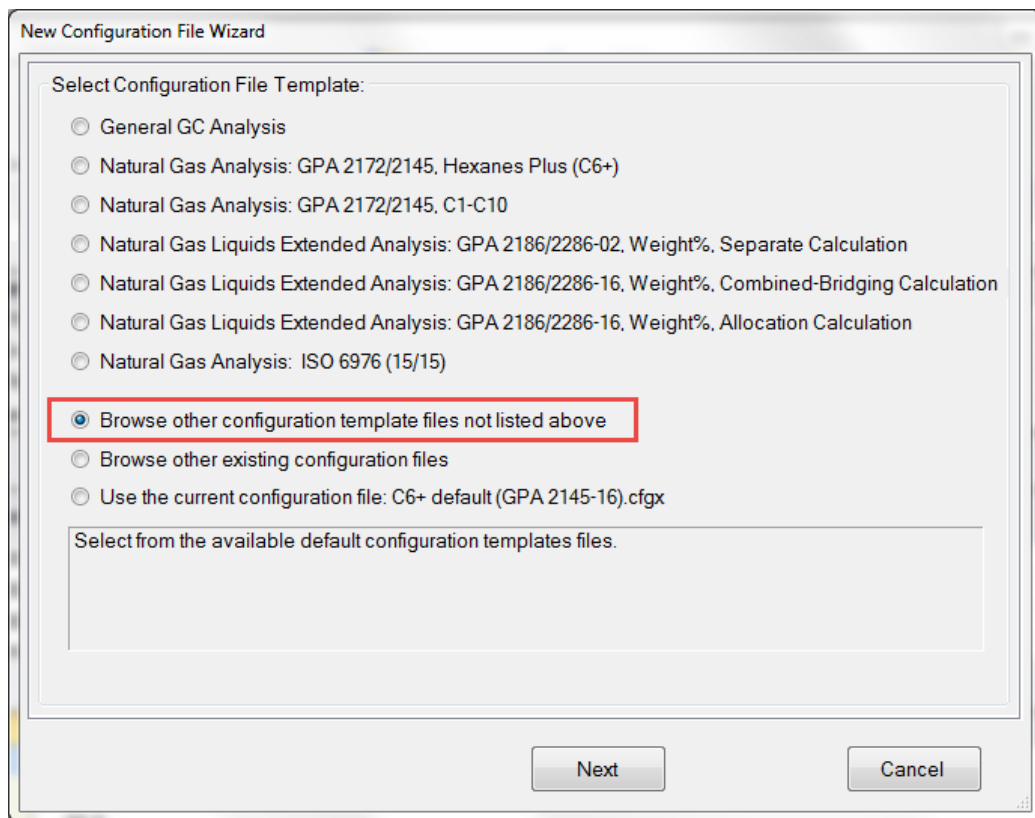
Quick Start Instructions

To get started using EZReporter 4.0 you will need to take the following steps:

1. Select a configuration template to create a new configuration file.
2. Review and edit the configuration
3. Configure an instrument for processing (skip if you are using the Data Analysis Edition of EZReporter 4.0)
4. Enable sample processing (skip if you are using the Data Analysis Edition of EZReporter 4.0)

Select a Configuration Template

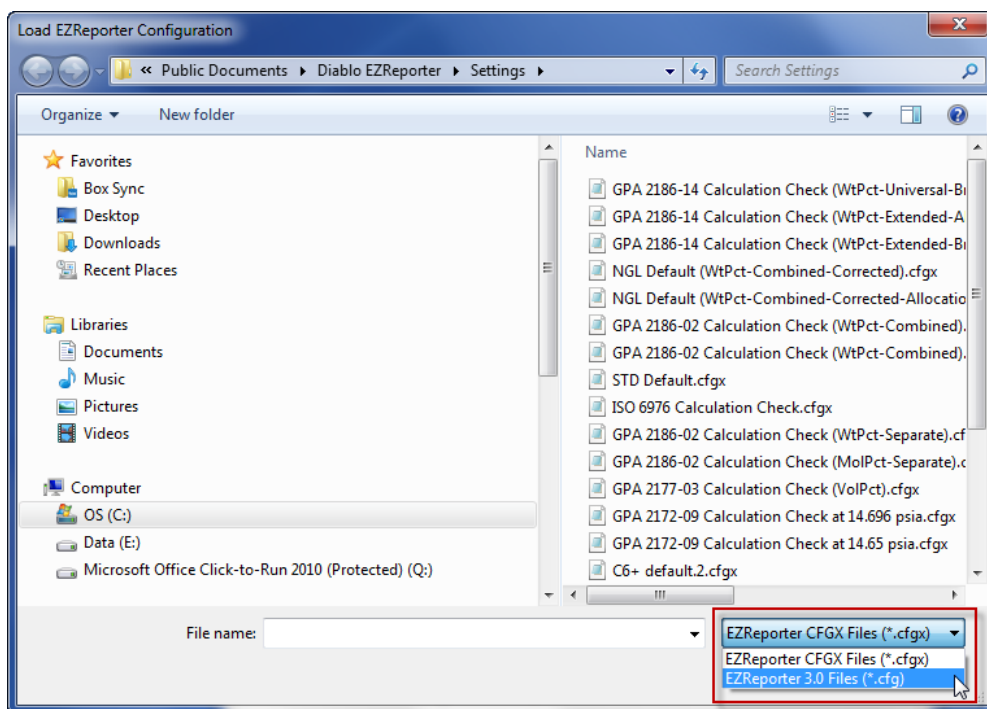
When you start EZReporter 4.0 for the first time, you will be presented with the New Configuration File Wizard, which allows you to choose the configuration template you want to use to create your configuration file.



You can choose one of the common default configuration templates, browse for another configuration template, or select an existing configuration file to use as the template for the new file.

If you choose to use an existing configuration file as the template, you can select either an EZReporter 4.0 configuration file (.CFGX) or an EZReporter 3.0 configuration file (.CFG) by clicking the file types list box.

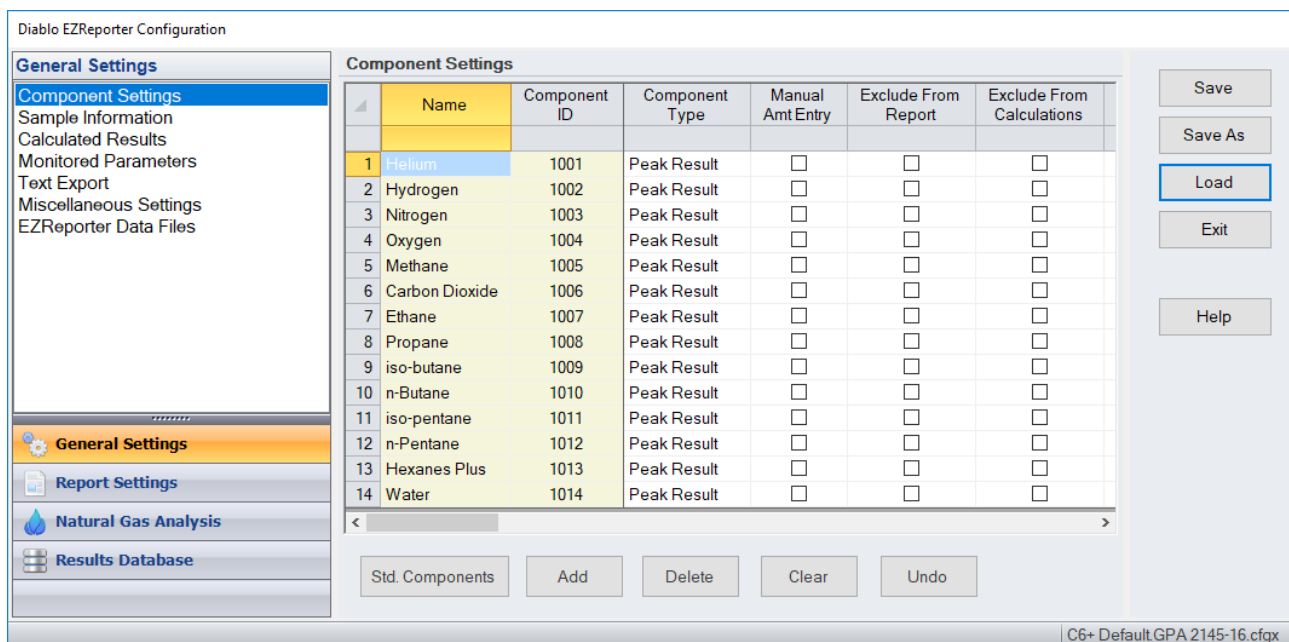
Note: if you choose an EZReporter 3.0 configuration file as the template, it will be converted automatically to an EZReporter 4.0 configuration file and saved in the EZReporter 4.0 settings folder. The original EZReporter 3.0 configuration file will not be modified.



After selecting the configuration template to use, you will be prompted for a configuration file name, and the new configuration file will be saved and loaded.

Review and Edit the Configuration

Once you have loaded a configuration file, you can review and edit the configuration by clicking the “Edit Configuration” button on the main toolbar or by clicking the “Tools > Edit Configuration...” menu option.



To navigate the configuration editor, simply click the desired settings category at the bottom of the navigation bar, and then click the desired settings from the list that is displayed for that category.

Important: In order for EZReporter to identify the component results from the chromatography data system correctly, the component names in the EZReporter component table must match the spelling of the corresponding component name

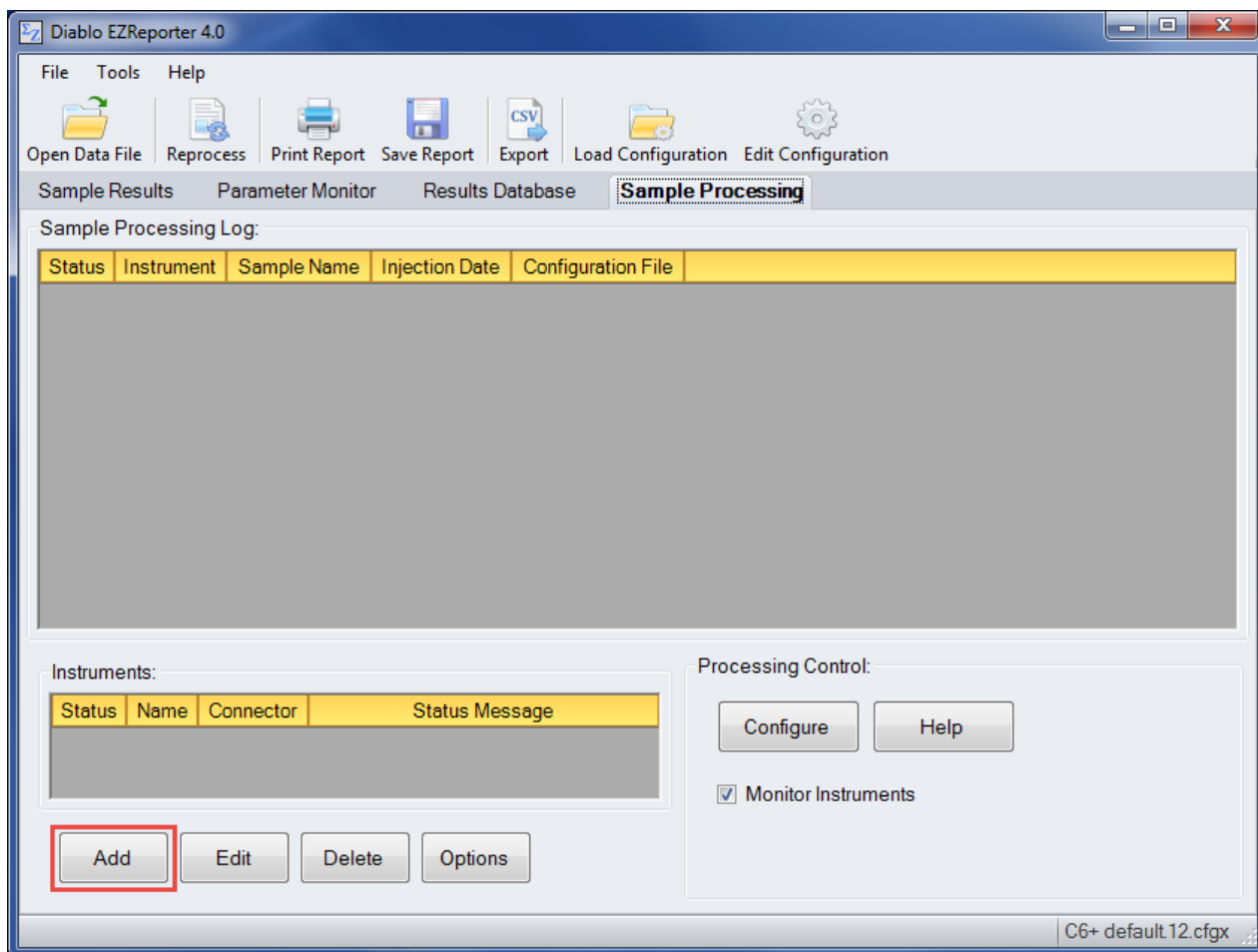
from the GC results exactly (differences in capitalization are ignored). See the EZReporter reference manual for more information.

Configure Instrument for Processing

After selecting and loading a configuration file, you must next configure EZReporter to process results from your chromatography data system.

Add an Instrument

First, you must add and configure an instrument. Switch to the “Sample Processing” tab of the main window, and click the “Add” button below the instruments table.

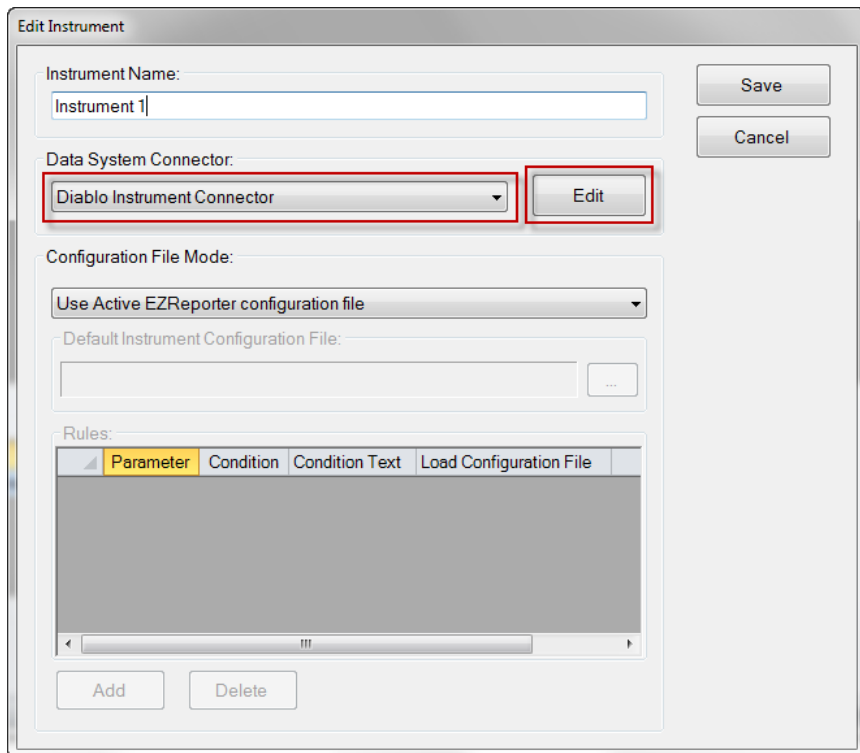


Select the Data System Connector

In order to process results from your chromatography data system, you must select the Data System Connector for the data system you are using, and then “Edit” the connector to select and apply any connector-specific settings.

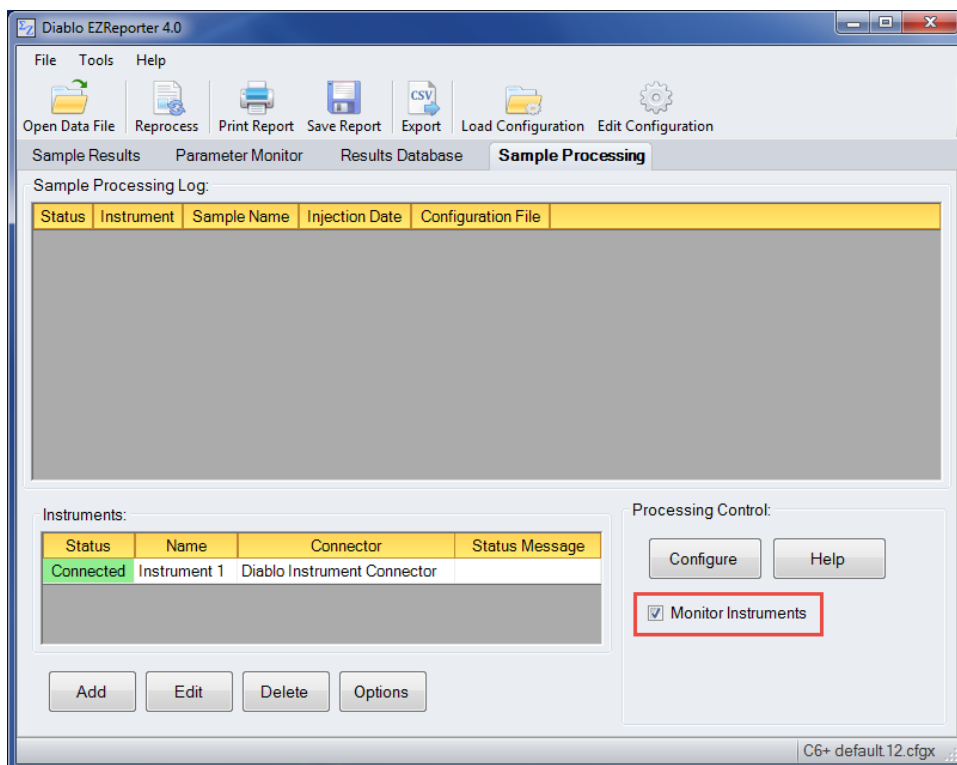
Please refer to the reference manual or help file for the particular Data System Connector you are using.

Important: The data system connectors available for you to select will depend on which version of the installation program you used to install the EZReporter 4.0 software. Make sure that you download the installer that includes support for the chromatography data system you are using to control your gas chromatograph.



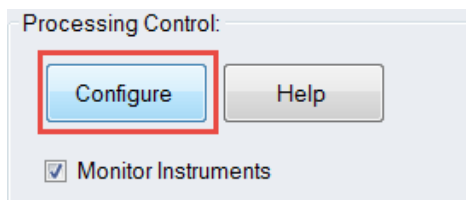
Enable Sample Processing

After configuring the instrument, you are ready to begin monitoring the instrument and processing results. Check the “Monitor Instruments” checkbox to begin monitoring the instrument for results and processing results automatically as soon as they are received from the connector.

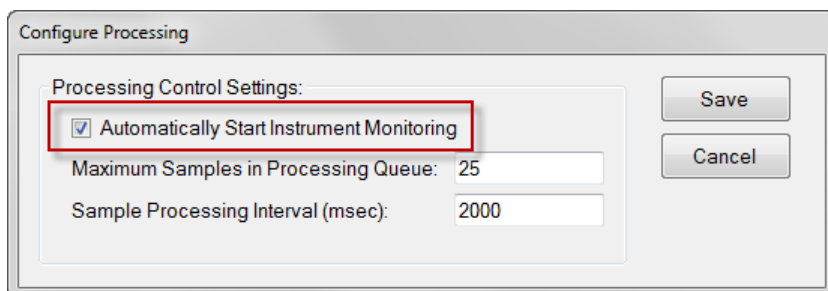


Start Instrument Monitoring Automatically

If you want EZReporter to begin monitoring for results from all configured instruments automatically after starting up, click the “Configure” button in the Processing Control panel:

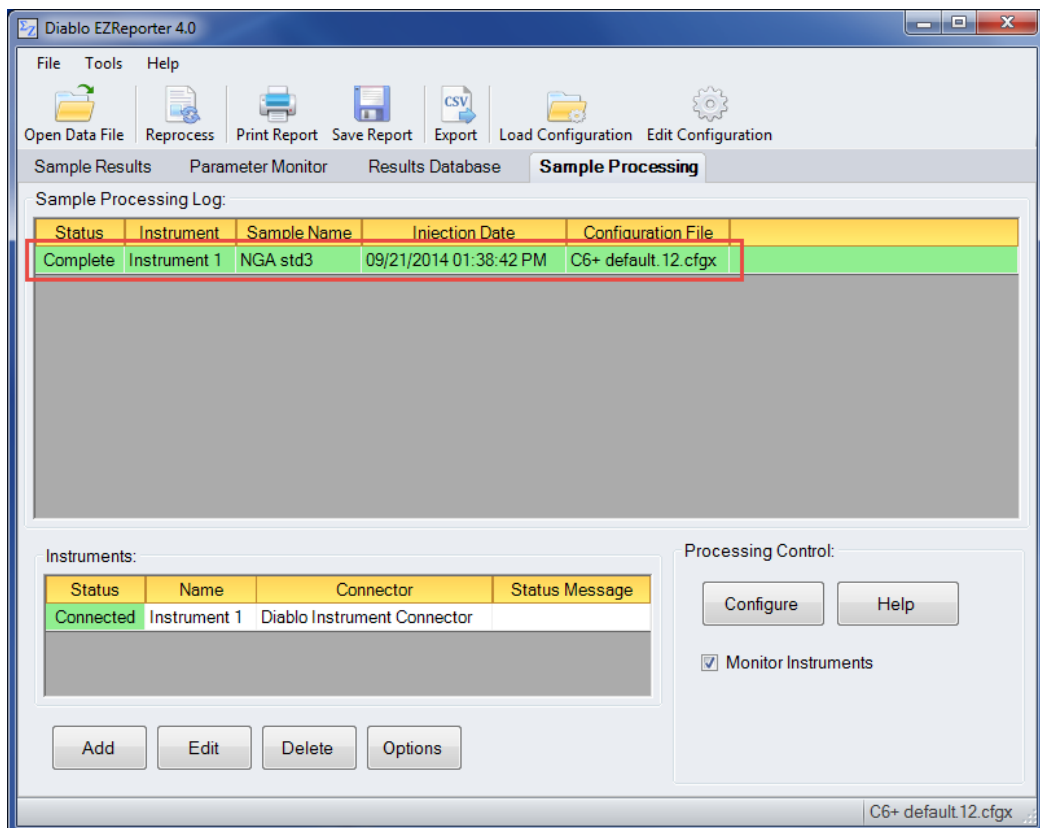


In the “Configure Processing” window, check “Automatically Start Instrument Monitoring”, and “Save”:



Processing Results

With both “Monitor Instruments” and “Process Results” checked, EZReporter will process any results that have been added to the sample log table as they are submitted by the data system connector. Processing is performed in the order added, and the table is checked for new samples on the sample processing interval specified in the Processing Control Settings.



Index

C

Chromatography Data Systems 2

E

EZReporter 3.0 Compatibility 2
EZReporter 3.0 Configuration Files 2
EZReporter Manuals and Help 3

G

Getting Started 1

I

Installation 2
Introduction 1

Q

Quick Start Instructions 5

S

Software Licensing and Activation 4
System Requirements 1

W

Windows 10 Compatibility 1
Windows Screen Resolution 1