

SRI PeakSimple Connector Plugin

The screenshot displays the main interface of the Diablo EZReporter 4.0 software. The window title is "Diablo EZReporter 4.0". The menu bar includes "File", "Tools", and "Help". The toolbar contains icons for "Open Data File", "Reprocess", "Print Report", "Save Report", "Export", "Load Configuration", and "Edit Configuration". The "Sample Results" tab is active, showing the following sections:

Sample Information:

Sample Information	
Sample Name	GPA 2172-09 Calculation Check at 14.696 psia
Report Date	2015-01-27 12:06:23
EZReporter Configuration File	GPA 2172-09 Calculation Check at 14.696 psia.cfgx

Component Results:

Component Name	Norm%	Norm Mol% (Sat.)	Norm Mol% (Wet)	Weight% (Dry)	Weight% (Sat.)	Weight% (Wet)	Gross H (BTU / Ide)
Water	0.0000	1.7447	1.6180	0.0000	1.5538	1.4408	
Helium	0.0300	0.0295	0.0295	0.0059	0.0058	0.0058	

Results Summary:

Result	Dry	Sat. (Base)	Sat. (Flowing)
Total Raw Mole% (Dry)	100.0000		
Pressure Base (psia)	14.696		
Temperature Base	60.0		

Errors and Warnings:

Type	Source	Description

The status bar at the bottom right shows the file path: "GPA 2172-09 Calculation Check at 14.696 psia.cfgx".

Diablo Analytical EZReporter Software
EZReporter 4.0 SRI PeakSimple Connector Plugin

Copyright 2016, Diablo Analytical, Inc. All rights reserved.

This software and documentation are copyrighted by Diablo Analytical, Inc. All other brands or product names are trademarks or registered trademarks of their respective owners.

Diablo Analytical, Inc.

5141 Lone Tree Way
Antioch, CA 94531

Phone: 925-755-1005

Fax: 925-755-1007

E-mail: support@diabloanalytical.com

Home Page: www.diabloanalytical.com

Manual Revision 20161221-1654

DIABLO ANALYTICAL, INC. SOFTWARE LICENSE AGREEMENT AND LIMITED WARRANTY

LICENSE AGREEMENT

IMPORTANT: Please carefully read the License Agreement below before installing the software. The right to use this software product is sold only on the condition that the customer agrees to the following license. **INSTALLING THE SOFTWARE INDICATES YOUR ACCEPTANCE OF THESE TERMS AND CONDITIONS.**

In return for payment of the one-time license fee for this software product, Customer receives from Diablo Analytical, Inc. (Diablo) a license to use the product subject to the following terms and conditions:

Use: The product may be used one computer or workstation. A separate license agreement and fee is required for each additional computer or workstation on which the product is used. Customer may not reverse assemble, decompile, or modify the software.

Copies: The software product may not be duplicated or copied except for archive purposes, program error verification, or to replace defective media, and all copies made must bear the copyright notices contained in the original.

Ownership: Purchase of this license does not transfer any right, title or interest in the software product to Customer except as specifically set forth in this License Agreement. Customer is on notice that the software product is protected under copyright laws.

Transfer of Rights: This license and the software product may be transferred to a third party, with prior written consent from Diablo, provided the third party agrees to all the terms of this License Agreement and the Customer does not retain any copies of the software product.

Sublicensing and Distribution: Customer may not sublicense the software or distribute copies of the software to the public in physical media or by telecommunication without the prior written consent of Diablo.

Termination: Diablo reserves the right to terminate this license upon breach. In event of termination, Customer will either return all copies of the product to Diablo, or with Diablo's prior consent, provide Diablo with a certificate of destruction of all copies.

Updates and Upgrades: Customer agrees that the software does not include updates and upgrades which may be available from Diablo in a separate support agreement.

Export Restrictions: Customer agrees not to export or re-export the software or any copy in violation of the U.S. Export Administration regulations or other applicable regulation.

LIMITED WARRANTY

Limited Warranty: Diablo warrants that the original disks are free from defects for 90 days from the date of delivery of the software.

No Other Warranties: To the maximum extent permitted by applicable law, Diablo expressly disclaims any warranty for the software product. The software product and any related documentation is provided "as is" without warranty of any kind, either express or implied, including, without limitation, the implied warranties or merchantability of fitness for a particular purpose. The entire risk arising out of use or performance of the software product remains with the customer.

Limitation of Liability and Customer Remedies: Diablo's entire liability and the customer's exclusive remedy under this license agreement shall be, at Diablo's option, either (a) return of the price paid for the software or (b) replacement of the software that does not meet Diablo's Limited Warranty and which is returned to Diablo with a copy of the customer's receipt. Any replacement software will be warranted for the remainder of the original warranty period, or 30 days, whichever is longer. These remedies are not available outside the United States of America.

No Liability for Consequential Damages: To the maximum extent permitted by applicable law, in no event shall Diablo be liable for any damages whatsoever (including, without limitation, damages for loss of business profit, business interruption, loss of business information, or any other pecuniary loss) arising out of the use or inability to use the product, even if Diablo has been advised of the possibility of such damages. Because some states/jurisdictions do not allow the exclusion or limitation of liability for consequential or incidental damages, the above limitation may not apply to you.

Contents

SRI PeakSimple Connector Plugin	1
Getting Started	1
Configure PeakSimple	1
Configure PeakSimple for Data Export.....	1
Configure the EZReporter Instrument	5
Add an Instrument	5
Select the Data System Connector.....	5
Configure the Connector	6
Index	9

SRI PeakSimple Connector Plugin

Getting Started

This document describes how to configure the SRI Instruments PeakSimple chromatography data system and the EZReporter 4.0 PeakSimple Connector Plugin so that results can be processed by EZReporter automatically at the end of each run.

Configure PeakSimple

The Diablo EZReporter software supports automated processing of calibrated, external-standard peak results generated by the SRI PeakSimple data system.

Important: In order to process results from the SRI PeakSimple data system, you must first make sure that the component names in the EZReporter component settings table match the peak names in the PeakSimple calibration tables. For example, if a compound is named "Hexane" in the PeakSimple calibration table, it must also be entered as "Hexane" in the component settings table (not "n-Hexane", or "nC6").

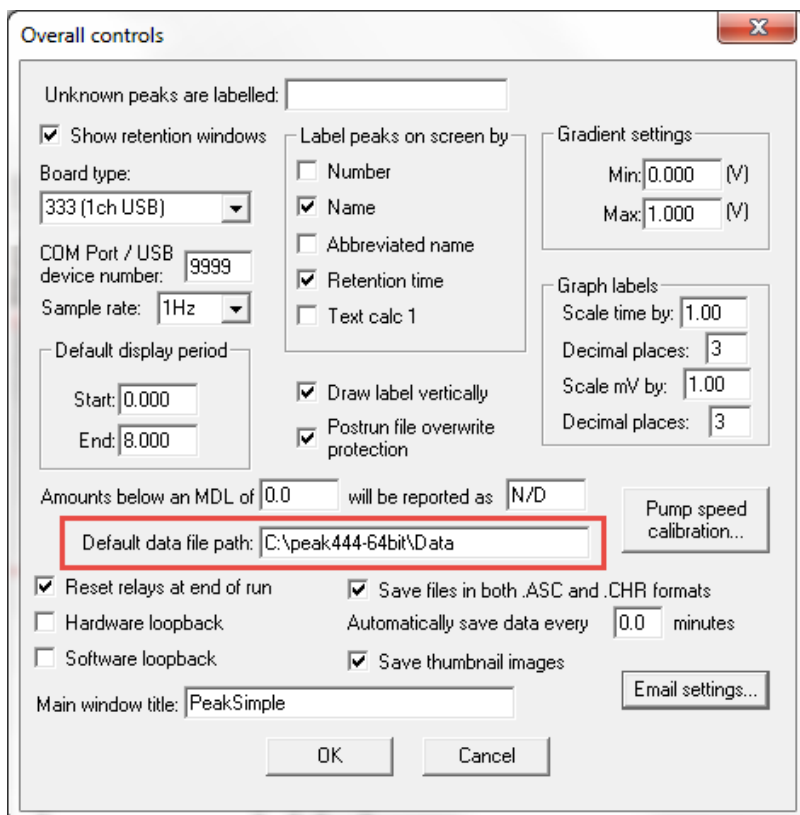
Configure PeakSimple for Data Export

EZReporter reads the PeakSimple “.RES” Results file that it is created at the end of the run.

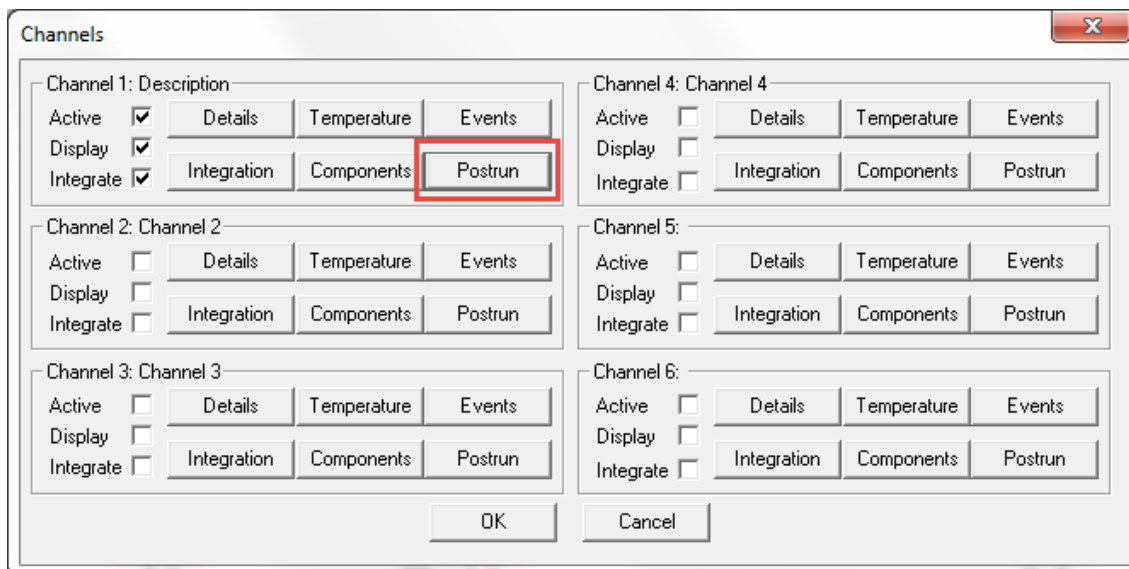
Important: The results files is deleted by the EZReporter PeakSimple connector after it has successfully read results from the file in order to prevent the same results from being loaded again.

1. **Check and/or set the PeakSimple “Default data file path”:** Click the PeakSimple main menu option, “Edit > Overall”. Make note of the “Default data file path”. This is the folder that the EZReporter PeakSimple Connector must monitor for results. You will need to select this folder when you configure the Connector in EZReporter.

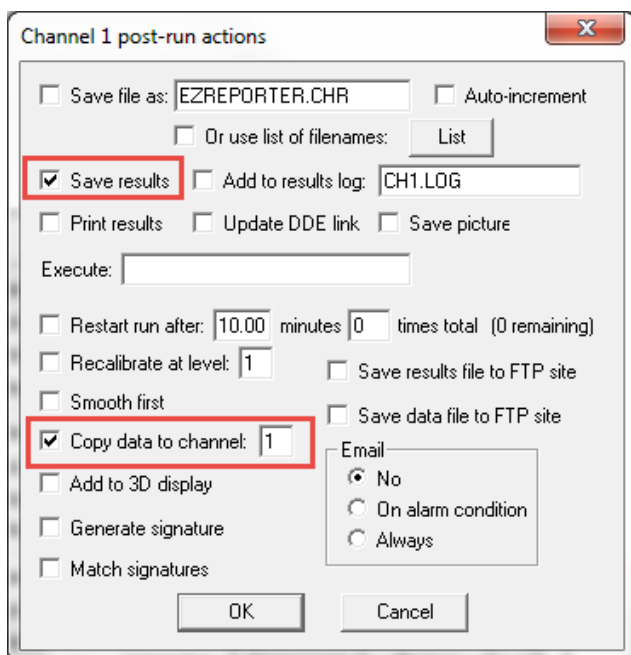
Note: If this field is blank, PeakSimple data and results files are saved to the PeakSimple installation folder, “C:\peak444-64bit”. The installation folder name may be different if you have a different version of the PeakSimple software installed.



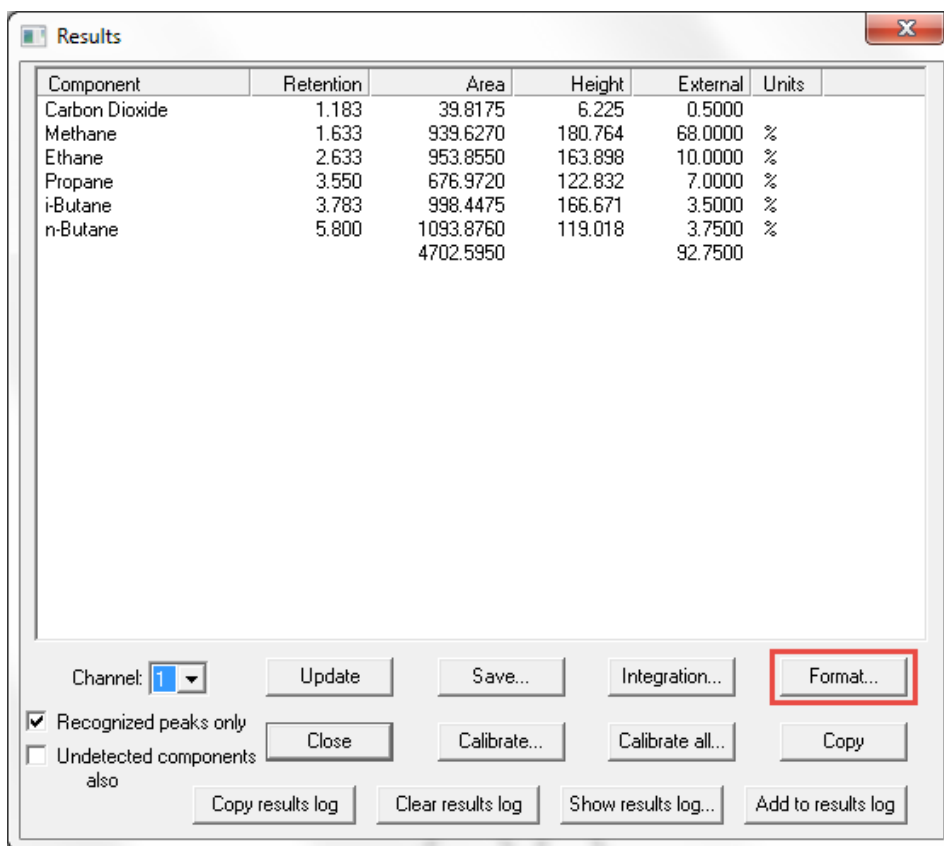
2. **Configure PeakSimple to save a Results file at the end of the run.** From the main PeakSimple menu, click the “Edit > Channels...” menu. Then, click the “Postun” button for the active channels”



In the “Post-run actions” window, check, the “Save Results” checkbox. If this is a multi-channel method, also check, “Copy data to channel” and specify the first active channel, which will usually be Channel 1. Repeat for all active channels.

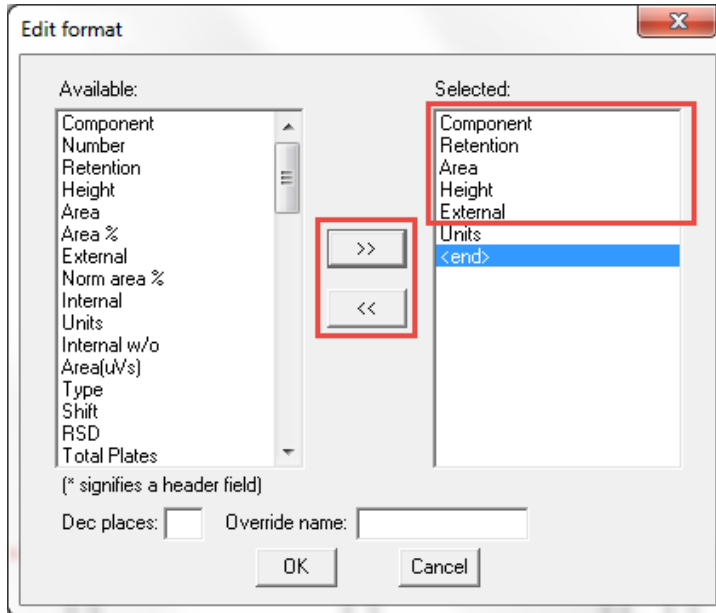


3. **Configure the format of the results file.** Click the PeakSimple main menu option, “View > Results...”. In the “Results window, click the “Format” button:



IMPORTANT: In the “Format” window, you **must** make sure that the first 5 items in the “Selected” column are listed in the order shown:

Component
Retention
Area
Height
External



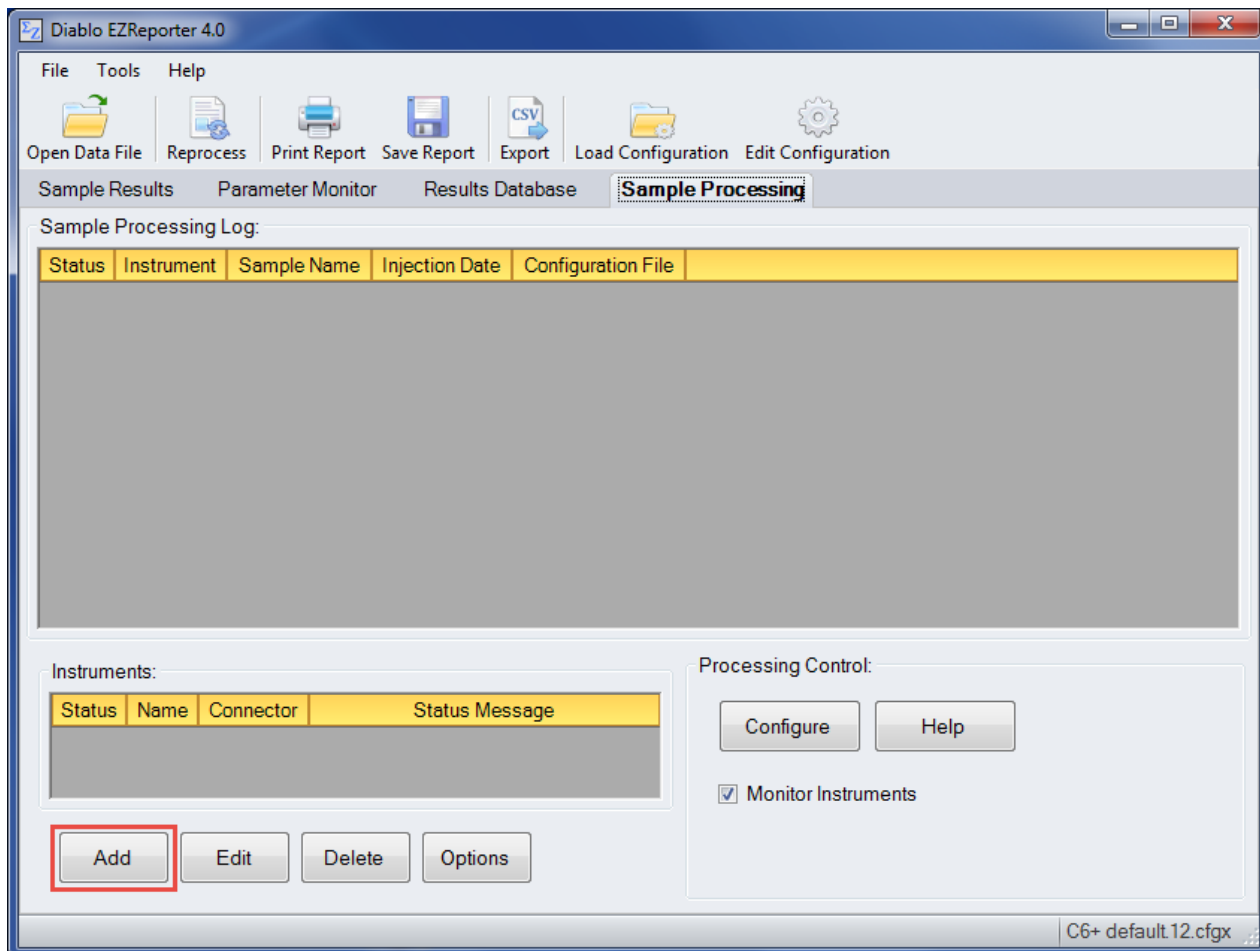
If any of these items are missing or are listed in a different order, then EZReporter will not read the peak results correctly. Use the “>>” and “<<” buttons to add and remove items from the list. You can add additional results to the end of the list.

- 4. Save your changes.** When you have finished making these changes to the PeakSimple configuration, you should click “File > Save All” to save your changes. It is also a good idea to save the configuration to a Control file so the settings can be recalled later.

Configure the EZReporter Instrument

Add an Instrument

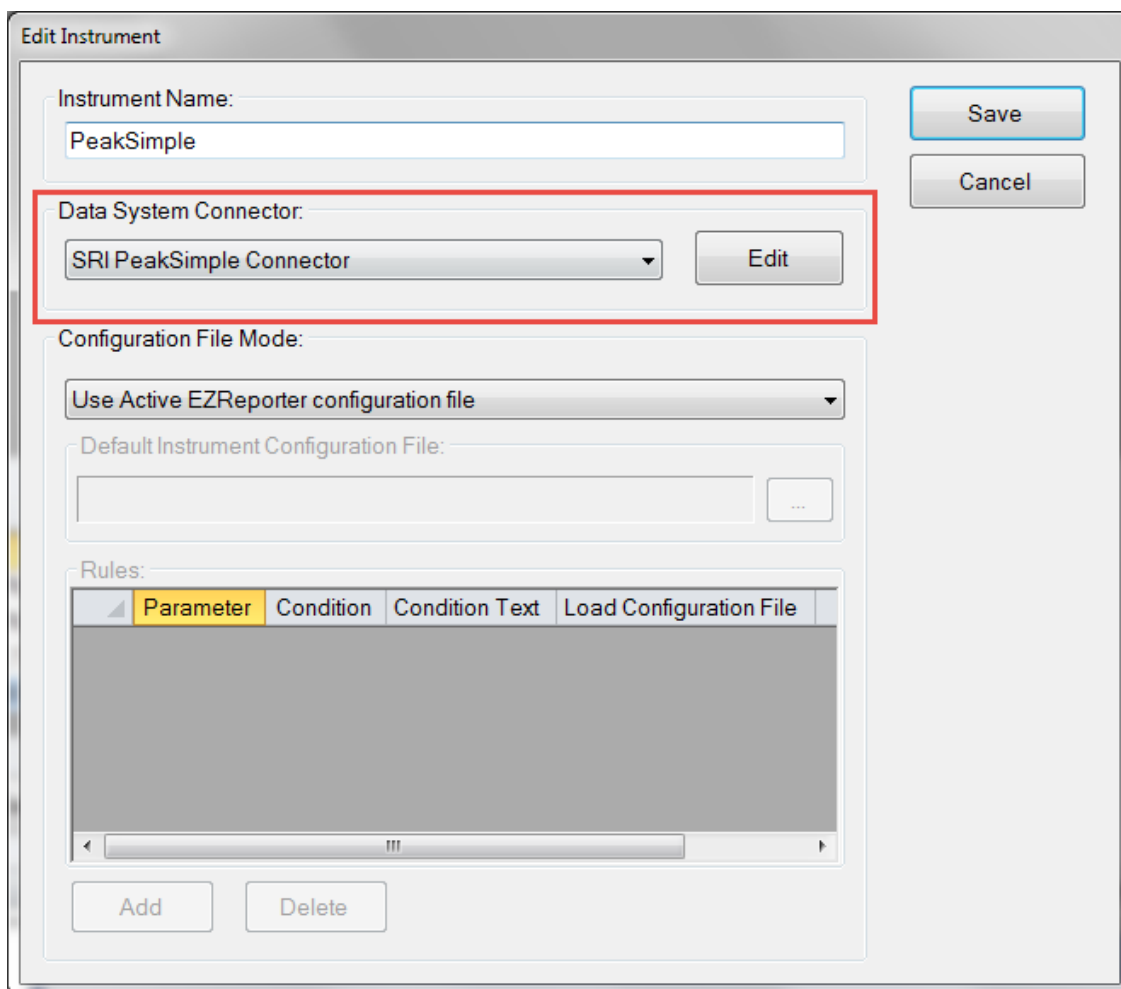
First, you must add and configure an instrument. Switch to the “Sample Processing” tab of the main window, and click the “Add” button below the instruments table.



Select the Data System Connector

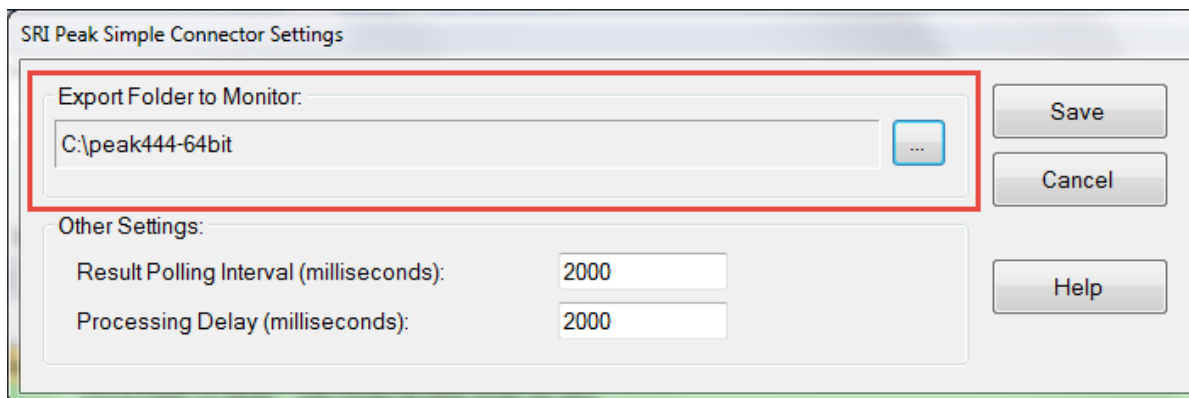
In order to process results from your chromatography data system, you must select the Data System Connector for the data system you are using, and then “Edit” the connector to select and apply any connector-specific settings. In this case, select the “SRI PeakSimple Connector”.

IMPORTANT: The data system connectors available for you to select will be dependent on which version of the installation program you used to install the EZReporter 4.0 software. Make sure that you download the installer version for the manufacturer of the chromatography data system you are using to control your gas chromatograph.



Configure the Connector

The only setting you typically need to set for the PeakSimple Connector is the “Export Folder to Monitor”. You must choose the “Default data file path” from the PeakSimple “Overall Controls” window as described above. EZReporter will monitor this folder for the Result files that are created. By default this folder is the PeakSimple installation folder.



Other Settings

These settings should not need to be changed in a typical installation.

Result Polling Interval: This is the interval in milliseconds at which the connector will check the export folder for new text files exported from PeakSimple. The default value of 2000 milliseconds should be correct for most situations.

Processing Delay: After finding new text files in the export folder, the connector will wait for this period in milliseconds before processing results. If you have a multi-channel GC, and for some reason PeakSimple is slow to export results for some of the detector channels, then you can increase the delay time to allow all the text files to be generated before processing results. The default value of 2000 milliseconds should be correct for most situations.

Index

A

Add an Instrument 5

C

Configure PeakSimple 1

Configure PeakSimple for Data Export 1

Configure the Connector 6

Configure the EZReporter Instrument 5

G

Getting Started 1

O

Other Settings 7

S

Select the Data System Connector 5

SRI PeakSimple Connector Plugin 1