

Chromeleon Connector Plugin

The screenshot displays the main window of the Diablo EZReporter 4.0 application. The window title is "Diablo EZReporter 4.0". The menu bar includes "File", "Tools", and "Help". The toolbar contains icons for "Open Data File", "Reprocess", "Print Report", "Save Report", "Export", "Load Configuration", and "Edit Configuration". The "Sample Results" tab is active, showing a tree view with "Sample Information", "Parameter Monitor", "Results Database", and "Sample Processing".

Sample Information:

Sample Information	
Sample Name	GPA 2172-09 Calculation Check at 14.696 psia
Report Date	2015-01-27 12:06:23
EZReporter Configuration File	GPA 2172-09 Calculation Check at 14.696 psia.cfgx

Component Results:

Component Name	Norm%	Norm Mol% (Sat.)	Norm Mol% (Wet)	Weight% (Dry)	Weight% (Sat.)	Weight% (Wet)	Gross H (BTU / Ide)
Water	0.0000	1.7447	1.6180	0.0000	1.5538	1.4408	
Helium	0.0300	0.0295	0.0295	0.0059	0.0058	0.0058	

Results Summary:

Result	Dry	Sat. (Base)	Sat. (Flowing)
Total Raw Mole% (Dry)	100.0000		
Pressure Base (psia)	14.696		
Temperature Base	60.0		

Errors and Warnings:

Type	Source	Description

The status bar at the bottom right shows the file path: "GPA 2172-09 Calculation Check at 14.696 psia.cfgx".

Diablo Analytical EZReporter Software
EZReporter 4.0 Thermo Chromeleon Connector Plugin

Copyright 2016, Diablo Analytical, Inc. All rights reserved.

This software and documentation are copyrighted by Diablo Analytical, Inc. All other brands or product names are trademarks or registered trademarks of their respective owners.

Diablo Analytical, Inc.

5141 Lone Tree Way
Antioch, CA 94531

Phone: 925-755-1005

Fax: 925-755-1007

E-mail: support@diabloanalytical.com

Home Page: www.diabloanalytical.com

Manual Revision 20160111-1306

DIABLO ANALYTICAL, INC. SOFTWARE LICENSE AGREEMENT AND LIMITED WARRANTY

LICENSE AGREEMENT

IMPORTANT: Please carefully read the License Agreement below before installing the software. The right to use this software product is sold only on the condition that the customer agrees to the following license. **INSTALLING THE SOFTWARE INDICATES YOUR ACCEPTANCE OF THESE TERMS AND CONDITIONS.**

In return for payment of the one-time license fee for this software product, Customer receives from Diablo Analytical, Inc. (Diablo) a license to use the product subject to the following terms and conditions:

Use: The product may be used one computer or workstation. A separate license agreement and fee is required for each additional computer or workstation on which the product is used. Customer may not reverse assemble, decompile, or modify the software.

Copies: The software product may not be duplicated or copied except for archive purposes, program error verification, or to replace defective media, and all copies made must bear the copyright notices contained in the original.

Ownership: Purchase of this license does not transfer any right, title or interest in the software product to Customer except as specifically set forth in this License Agreement. Customer is on notice that the software product is protected under copyright laws.

Transfer of Rights: This license and the software product may be transferred to a third party, with prior written consent from Diablo, provided the third party agrees to all the terms of this License Agreement and the Customer does not retain any copies of the software product.

Sublicensing and Distribution: Customer may not sublicense the software or distribute copies of the software to the public in physical media or by telecommunication without the prior written consent of Diablo.

Termination: Diablo reserves the right to terminate this license upon breach. In event of termination, Customer will either return all copies of the product to Diablo, or with Diablo's prior consent, provide Diablo with a certificate of destruction of all copies.

Updates and Upgrades: Customer agrees that the software does not include updates and upgrades which may be available from Diablo in a separate support agreement.

Export Restrictions: Customer agrees not to export or re-export the software or any copy in violation of the U.S. Export Administration regulations or other applicable regulation.

LIMITED WARRANTY

Limited Warranty: Diablo warrants that the original disks are free from defects for 90 days from the date of delivery of the software.

No Other Warranties: To the maximum extent permitted by applicable law, Diablo expressly disclaims any warranty for the software product. The software product and any related documentation is provided "as is" without warranty of any kind, either express or implied, including, without limitation, the implied warranties or merchantability of fitness for a particular purpose. The entire risk arising out of use or performance of the software product remains with the customer.

Limitation of Liability and Customer Remedies: Diablo's entire liability and the customer's exclusive remedy under this license agreement shall be, at Diablo's option, either (a) return of the price paid for the software or (b) replacement of the software that does not meet Diablo's Limited Warranty and which is returned to Diablo with a copy of the customer's receipt. Any replacement software will be warranted for the remainder of the original warranty period, or 30 days, whichever is longer. These remedies are not available outside the United States of America.

No Liability for Consequential Damages: To the maximum extent permitted by applicable law, in no event shall Diablo be liable for any damages whatsoever (including, without limitation, damages for loss of business profit, business interruption, loss of business information, or any other pecuniary loss) arising out of the use or inability to use the product, even if Diablo has been advised of the possibility of such damages. Because some states/jurisdictions do not allow the exclusion or limitation of liability for consequential or incidental damages, the above limitation may not apply to you.

Contents

- Chromeleon Connector Plugin** **1**
- Getting Started 1
- Configure Chromeleon 1
 - Configure the Report Template 1
 - Multiple Channel Export 4
- Configure the EZReporter Instrument 7
 - Add an Instrument 7
 - Select the Data System Connector..... 7
 - Configure the Connector 8

- Index** **11**

Chromeleon Connector Plugin

Getting Started

This document describes how to configure the Thermo Scientific Chromeleon chromatography data system so that results can be processed automatically by EZReporter at the end of each run.

Configure Chromeleon

The Diablo EZReporter software supports automated processing of calibrated peak results generated by the Thermo Scientific Chromeleon data system.

Important: In order to process results from the Chromeleon data system, you must first make sure that the names in the EZReporter component settings table match the compound names in the Chromeleon component list. For example, if a compound is named "Hexane" in the Chromeleon component list, it must also be entered as "Hexane" in the component settings table (not "n-Hexane", or "nC6").

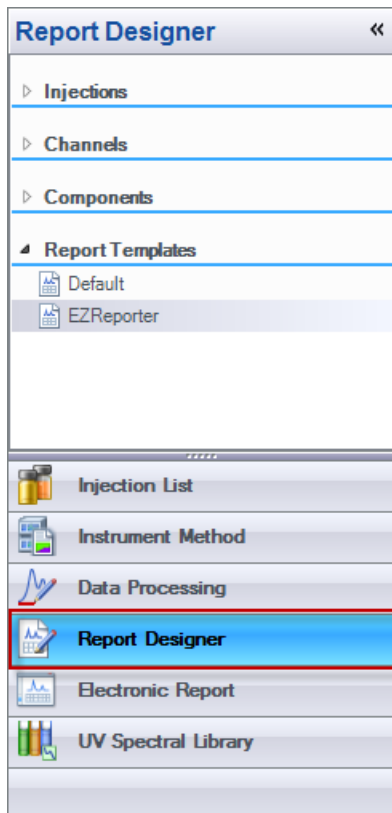
Once you have configured the report template as described below, make sure to save the changes to the template.

Configure the Report Template

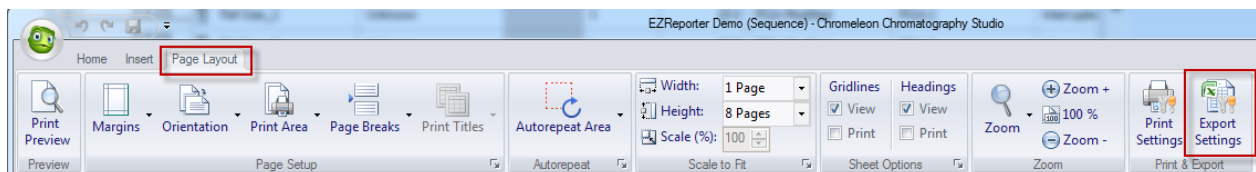
The EZReporter Chromeleon Connector Plugin reads text files exported from Chromeleon. The text files must be based on the Chromeleon default report template.

Important: In order for the Chromeleon Connector to read the exported text file and extract the information correctly, the default Integration Report titles, labels, and component tables should not be modified.

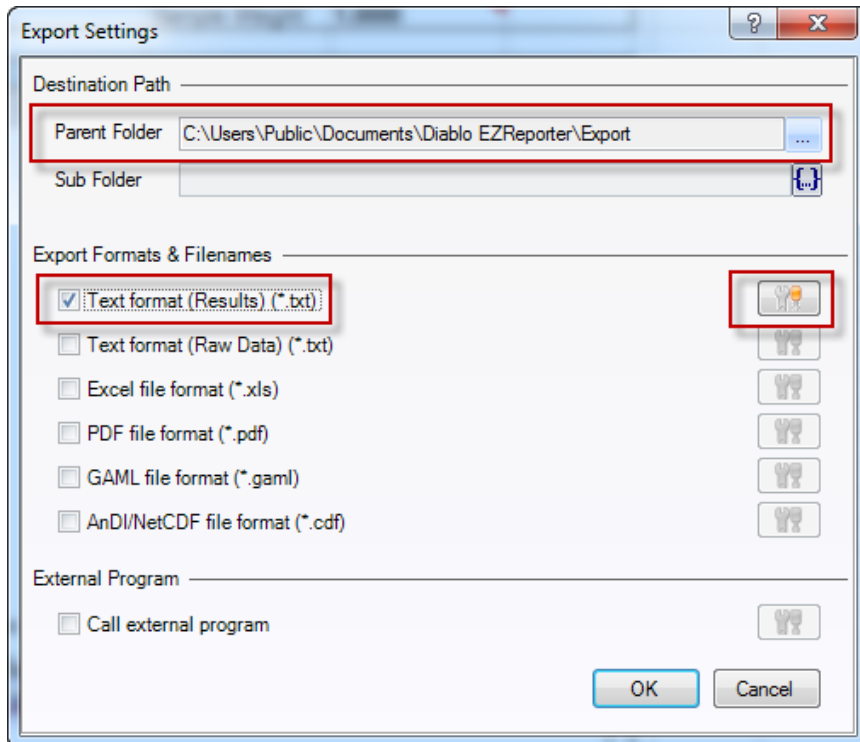
In the Chromeleon Data System, switch to the Report Designer for the method you want to configure to send results automatically to EZReporter for processing:



Click the “Page Layout” tab in the Chromeleon ribbon bar, and then click the “Export Settings” button:



Make the following Export Settings:



Destination Path

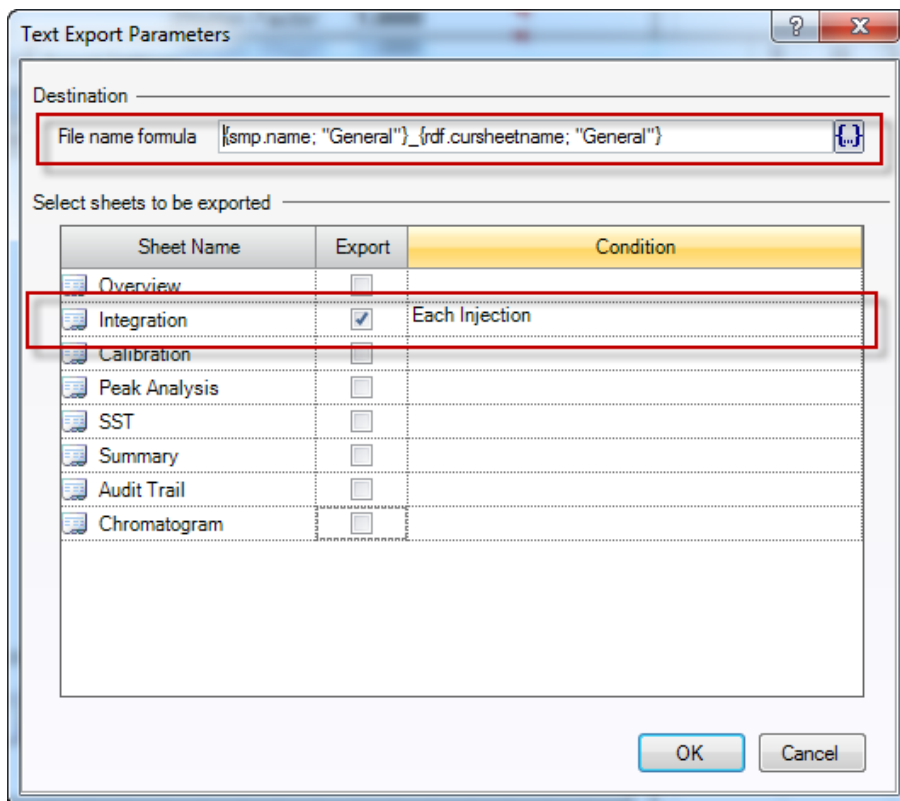
Under “Destination Path”, specify the Parent Folder as:

C:\Users\Public\Documents\Diablo EZReporter\Export

Note: This is the folder where the text file containing the report results will be saved by Chromeleon after each run. EZReporter will be configured to monitor this folder and process results when new text files are detected.

Export Formats & Filenames

Check “Text format (Results) (*.txt)” and then click the tool button to configure the export:



File Name Formula: Enter a file name formula. The default formula is based on the sample name and corresponding sheet name.

Important: If the default name includes a subfolder prefix, it should be removed as shown above.

Sheets to be exported: Only the “Integration” sheet needs to be exported to send results to EZReporter. Leave the “Condition” set to “Each Injection”.

Multiple Channel Export

If the method includes component results from multiple detector channels, you must configure the report template to “Autorepeat” for each channel as follows.

In the Report Designer, switch to the “Integration” tab to display the integration report:

M34

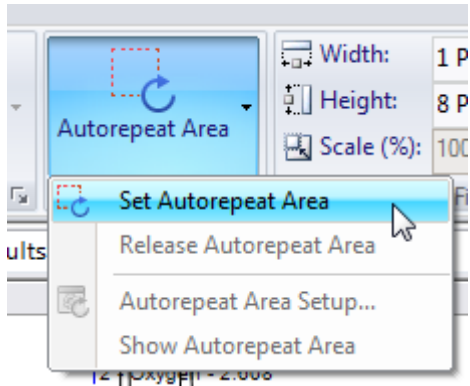
Chromatogram and Results							
Injection Details							
Injection Name:	Ref Gas_1	Run Time (min):	15.61				
Vial Number:	0	Injection Volume:	20.00				
Injection Type:	Unknown	Channel:	Right_TCD				
Calibration Level:		Wavelength:	n.a.				
Instrument Method:	RGA Modified	Bandwidth:	n.a.				
Processing Method:	RGA 2	Dilution Factor:	1.0000				
Injection Date/Time:	17/Apr/14 07:19	Sample Weight:	1.0000				
Chromatogram							
Integration Results							
No.	Peak Name	Retention Time min	Area mV*min	Height mV	Relative Area %	Relative Height %	Amount mol%
n.a.	CO2	n.a.	n.a.	n.a.	n.a.	n.a.	n.a.
1		2.235	0.357	6.401	2.20	3.73	n.a.
2	Oxygen	2.608	1.356	26.729	8.35	15.56	4.9499
3	Nitrogen	2.928	6.556	77.491	40.39	45.12	24.4537
4	CH4	3.593	7.178	56.622	44.22	32.97	34.5145
5	CO	4.740	0.787	4.513	4.85	2.63	3.0015
49	Total:		16.234	171.756	100.00	100.00	

Overview Integration Calibration Peak Analysis SST Summary Audit Trail Chromatogram

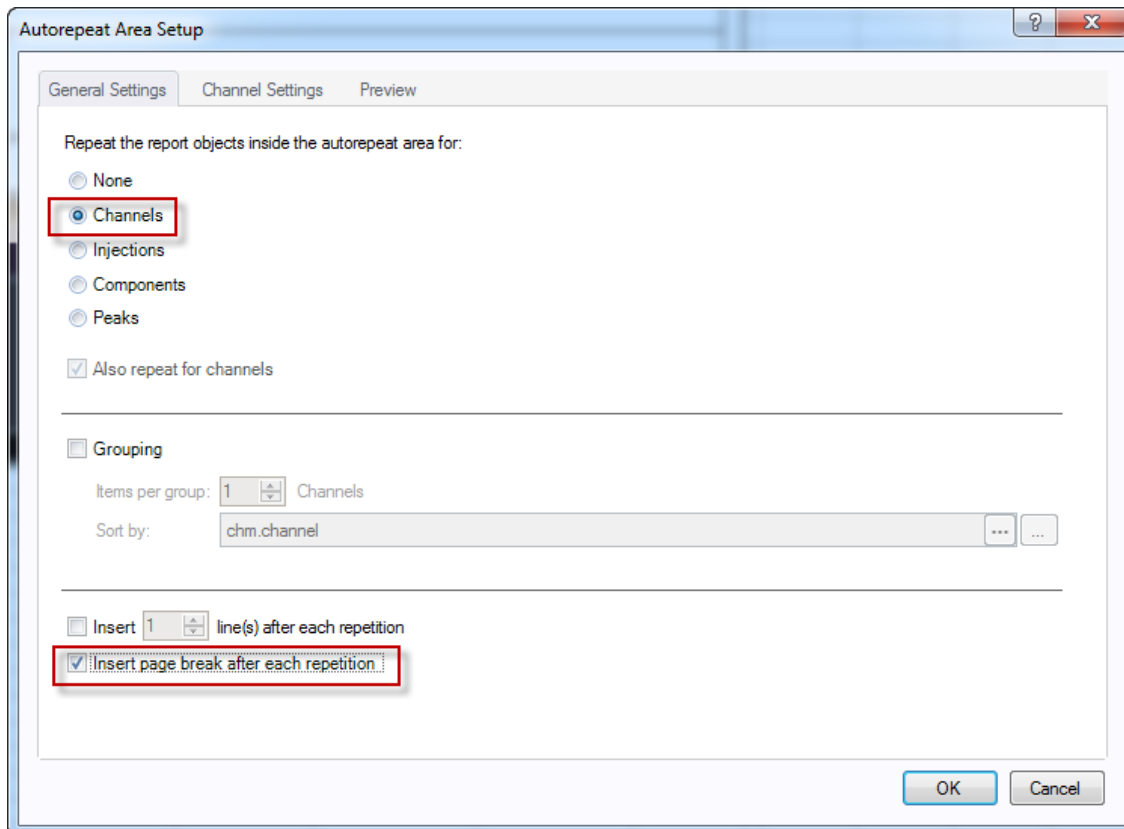
Select the entire “Integration Results” table including the title and “Total” rows by clicking the left mouse button in the upper left cell and releasing it in the lower right cell:

Integration Results							
No.	Peak Name	Retention Time min	Area mV*min	Height mV	Relative Area %	Relative Height %	Amount mol%
n.a.	CO2	n.a.	n.a.	n.a.	n.a.	n.a.	n.a.
1		2.235	0.357	6.401	2.20	3.73	n.a.
2	Oxygen	2.608	1.356	26.729	8.35	15.56	4.9499
3	Nitrogen	2.928	6.556	77.491	40.39	45.12	24.4537
4	CH4	3.593	7.178	56.622	44.22	32.97	34.5145
5	CO	4.740	0.787	4.513	4.85	2.63	3.0015
49	Total:		16.234	171.756	100.00	100.00	

Click the “Autorepeat Area” button in the toolbar and choose the “Set Autorepeat Area” option:



In the Autorepeat Area Setup window, set the following options:

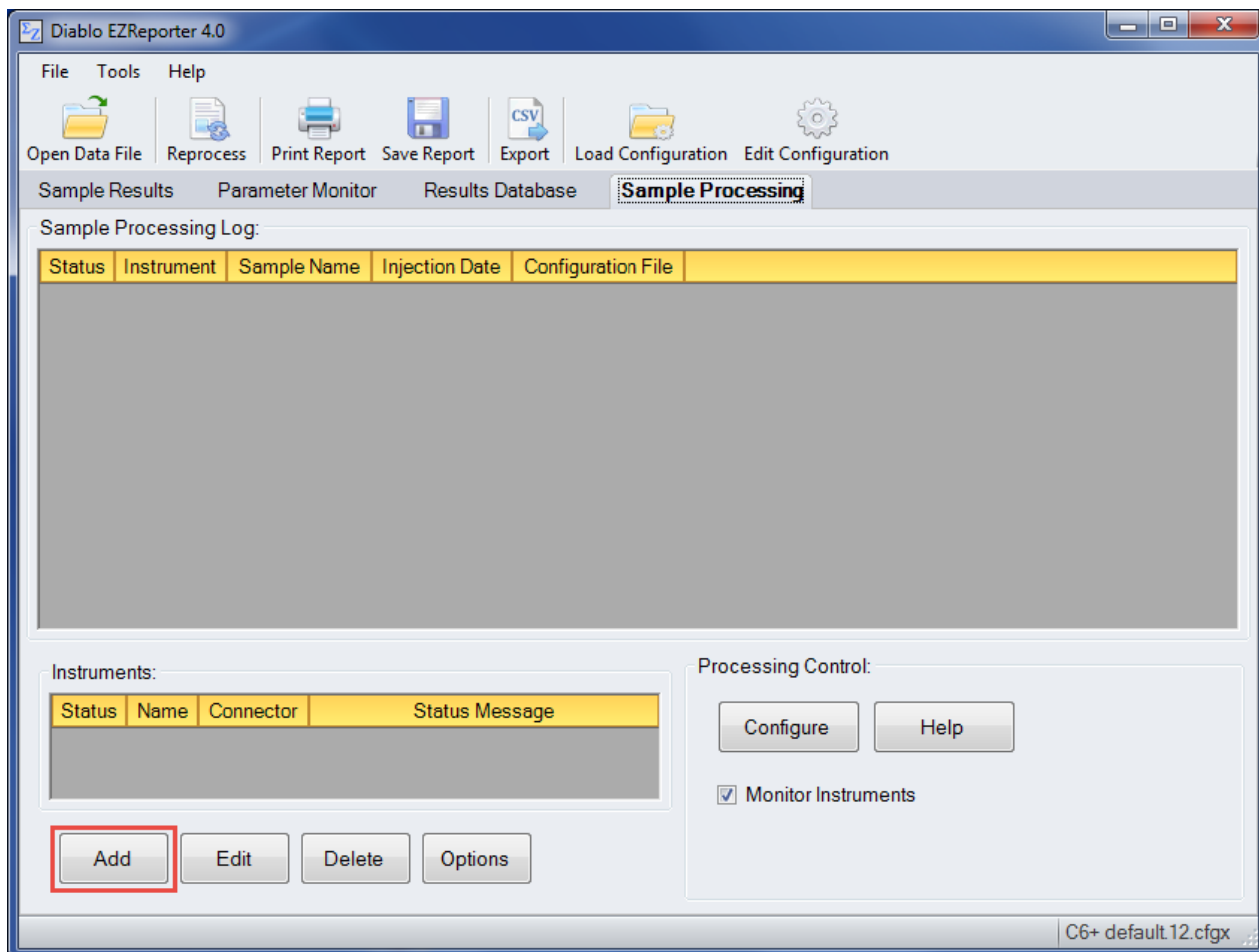


- Repeat the report objects inside the autorepeat area for: **Channels**
- Check, “**Insert page break after each repetition**”

Configure the EZReporter Instrument

Add an Instrument

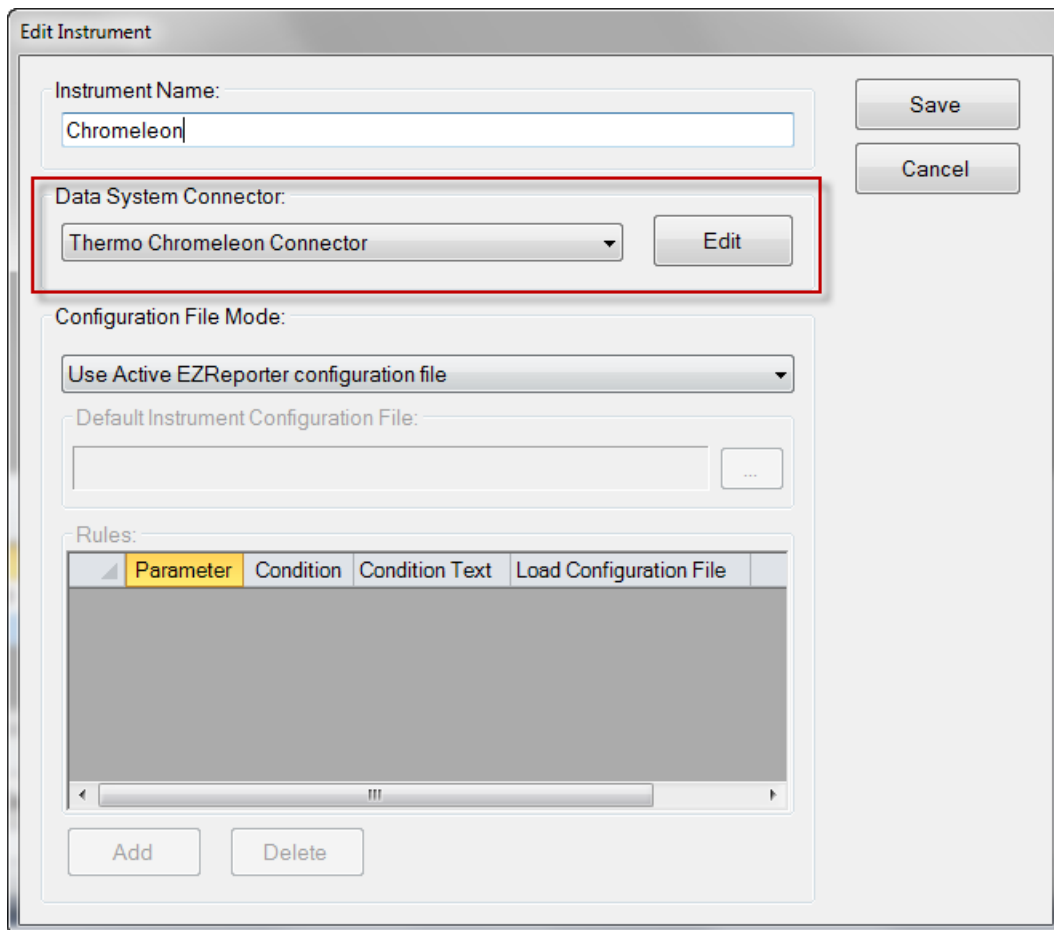
First, you must add and configure an instrument. Switch to the “Sample Processing” tab of the main window, and click the “Add” button below the instruments table.



Select the Data System Connector

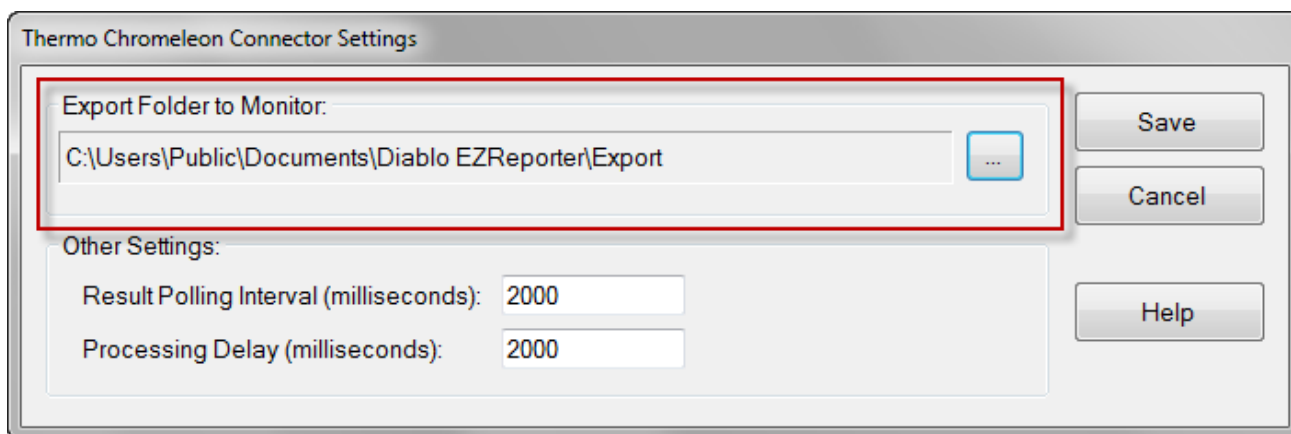
In order to process results from your chromatography data system, you must select the Data System Connector for the data system you are using, and then click the “Edit” button to apply any connector-specific settings. Please refer to the reference manual or help file for the particular Data System Connector you are using.

Important: The data system connectors available for you to select will be dependent on which version of the installation program you used to install the EZReporter 4.0 software. Make sure that you download the installer version for the manufacturer of the chromatography data system you are using to control your gas chromatograph.



Configure the Connector

The only setting you typically need to set for the Chromleon Connector is the “Export Folder to Monitor”. This must match the “Destination Path” you specified in the Chromleon Export Settings window.



Other Settings

These settings should not need to be changed in a typical installation.

Result Polling Interval: This is the interval in milliseconds at which the connector will check the export folder for new text files exported from Chromeleon. The default value of 2000 milliseconds should be correct for most situations.

Processing Delay: After finding new text files in the export folder, the connector will wait for this period in milliseconds before processing results. The default value of 2000 milliseconds should be correct for most situations.

Index

A

Add an Instrument 7

C

Chromeleon Connector Plugin 1

Configure Chromeleon 1

Configure the Connector 8

Configure the EZReporter Instrument 7

Configure the Report Template 1

G

Getting Started 1

M

Multiple Channel Export 4

O

Other Settings 8

S

Select the Data System Connector 7