

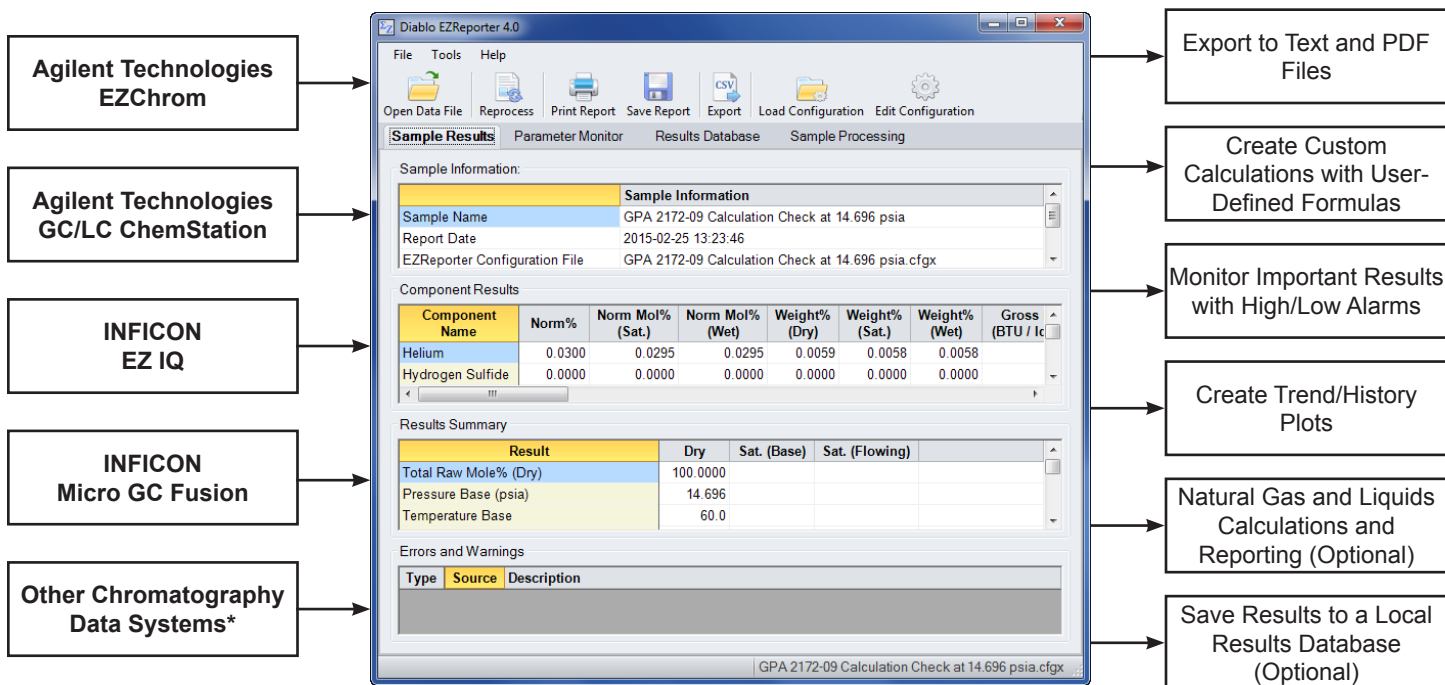


Diablo Analytical, Inc.

A Technology and Development Company

EZReporter 4.0 Software

Flexible, Advanced, Post-run Reporting and Analysis for Chromatography Data Systems



*Contact Diablo Analytical for information other supported chromatography data systems

EZReporter Editions

The following table lists the different editions of EZReporter 4.0 that can be licensed and the modules that are included in each of those editions. Refer to the data sheet for each module for more information on the complete feature set for that module. Part numbers and prices for new licenses and upgrades from earlier versions are provided on the EZReporter 4.0 Price List.

Software Edition	Modules					
	Standard	NGA	NGL	RDB	Processing	Instruments
Data Analysis	X	X	X			
Standard	X				X	1
Results Database (RDB)	X			X	X	1
Natural Gas Analysis (NGA)	X	X			X	1
Natural Gas Liquids (NGL)	X	X	X		X	1
Natural Gas Analysis Database	X	X		X	X	1
Natural Gas Liquids Database	X	X	X	X	X	1



Diablo Analytical, Inc.

A Technology and Development Company

Standard Edition

The Standard Edition can process calibrated peak results automatically from any supported chromatography data system. It allows for flexible reporting and exporting, parameter alarms, and history/trend plotting among other capabilities.

- **Multi-Channel Reporting:** Results from multiple detector channels can be combined into a single report with both raw and normalized amounts (normalized across all channels) displayed.
- **Custom Calculations:** You can create custom formulas using GC component results and other results. The results of the custom calculations can be displayed on the printed report, monitored, trend plotted, and exported to text files.
- **Easily Update the Component List:** The list of components to process and report is completely customizable. Components can be added to or deleted from the component list. Natural Gas Analysis/Liquids calculation constants can be loaded from standard data sources or entered manually.
- **Data Export:** Results can be exported to a text file for transfer to a Laboratory Information Management System (LIMS), Process Control System, or Microsoft Excel. The format of the text file can be customized easily using EZReporter's flexible **Export Templates**.
- **Custom Sample Information:** You can create custom sample information fields to include in the printed report, exported results, and data files.
- **Monitor Important Results:** You can monitor important results and assign high/low visual alarms to notify you when those results exceed the limits.
- **Trend/History Plots:** You can create trend plots of important results to see how they change with time.

Optional Modules

The following optional modules can be added to the Standard Edition to provide additional capability.

- **Natural Gas Analysis Module:** Adds standard GPA 2172, GPA 2177, ASTM D3588, and ISO 6976 natural gas analysis calculations and reporting. The results from these calculations are available for use in custom calculations, reporting, monitoring, trend plotting, and exporting.
- **Natural Gas Liquids Module:** Performs standard Natural Gas Liquids extended analysis and reporting based on the GPA 2186-02 and GPA 2186-14 (and related) standards.
- **Results Database Module:** Allows you to capture all results and save them in a local SQLite database. Results in the database can be searched by sample name and date range and can be batch re-processed for printing, exporting or trend plotting.

Supported Data Systems

EZReporter 4.0 currently supports automatic processing of results from the following chromatography data systems*

- Agilent Technologies EZChrom (Elite, SI, and OpenLab)
- Agilent Technologies GC/LC ChemStation ("Classic" and OpenLab)
- INFICON EZ IQ
- INFICON Micro GC Fusion

*Please contact Diablo Analytical regarding support for other chromatography data systems.

30-Day Trial Download

You can download a fully-functional, 30-day trial version of the EZReporter software from our web site. This allows you to evaluate all of the modules and determine if they meet your specific needs prior to a purchasing a license:

<http://www.diabloanalytical.com/ezr/ezreporter.htm>



Diablo Analytical, Inc.
5141 Lone Tree Way
Antioch, CA 94531

Phone: (925) 755-1005
Fax: (925) 755-1007
www.diabloanalytical.com